



Alma Road, London, SW18

1  1  1 

OFFERS IN EXCESS OF

£350,000
(£350,000)

Property details



Attributes

- Apartment

Alma Road, London, SW18

1 🏠 1 📄 1 📧

OFFERS IN EXCESS OF
£350,000
(£350,000)

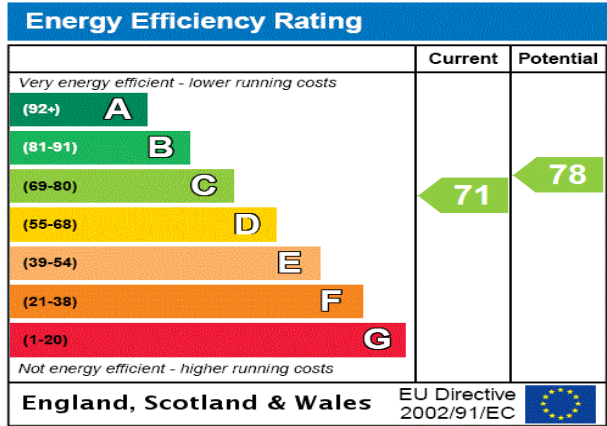
1 *Prices are subject to change, pound sterling price is converted using Bank of England exchange rates

Description

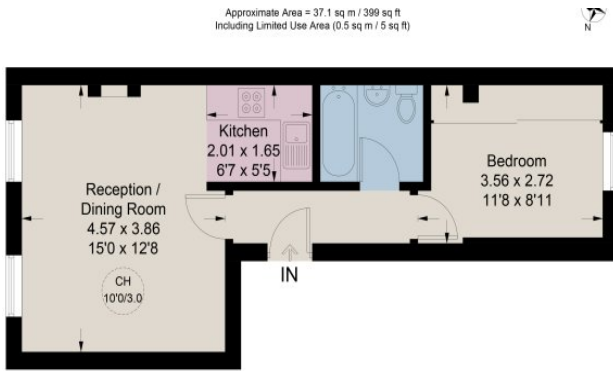
Immaculate, rare one bedroom apartment positioned in the sought after Tonsley's a short distance from Old York Road. The property comprises briefly; double bedroom with built in storage, well-appointed bathroom, modern kitchen and large reception/dining room. Having been meticulously finished to a high standard throughout, this bright, well configured property offers perfect balance and a turnkey product. This imposing Victorian Conversion situated close to Wandsworth Town and Clapham Junction Station offers wonderful transport links into central London. With very few offerings at the price in the fabled Tonsleys this is a must see property!Reference WAN210297







Floor plan



First Floor

Location





+44 20 3151 0367

international@johndwood.co.uk

www.johndwood-international.com

