



Rosary Gardens, London, SW7

2 2 1

£1,300,000

(Liquid error: internal)

Property details



Attributes

- Apartment

Rosary Gardens, London, SW7

2 2 1

£1,300,000
(Liquid error: internal)

1

*Prices are subject to change, pound sterling price is converted using Bank of England exchange rates

Description

A well presented two bedroom flat with a very impressive private roof terrace offering far reaching views and providing the perfect place to entertain guests. The apartment spans 756sq.ft. across the upper floors of this red brick Victorian terrace. Briefly comprising a west facing reception room with high ceilings and period features, a separate kitchen, two bedrooms, one en-suite and family bathroom. Rosary Gardens is a prestigious South Kensington address ideally located to enjoy the fantastic local amenities that the area has to offer. An array of smart restaurants, cafes and bars, world renowned museums and green open spaces of Kensington Gardens/Hyde Park are within walking distance. As well as excellent transport links with Gloucester Road (Circle, District and Piccadilly) and South Kensington Tube Stations (Circle & District). Reference ECR210010





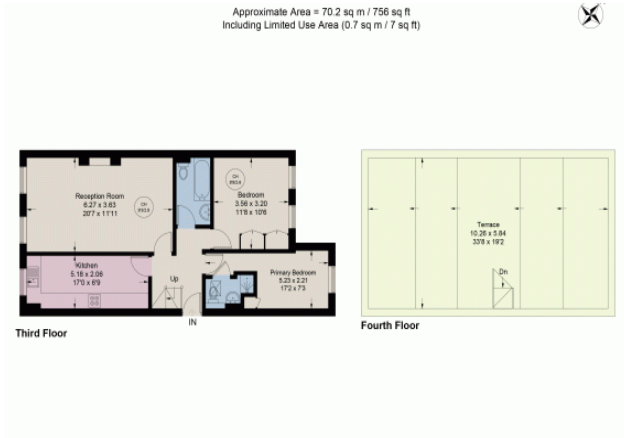




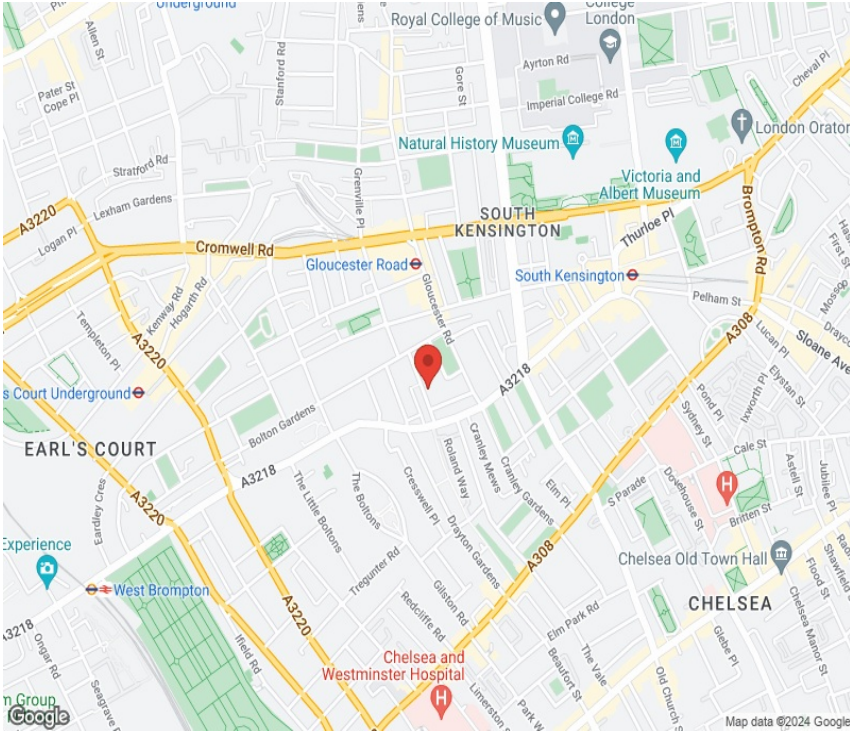


Energy Efficiency Rating		
	Current	Potential
<i>Very energy efficient - lower running costs</i>		
(92+) A		
(81-91) B		
(69-80) C		80
(55-68) D	60	
(39-54) E		
(21-38) F		
(1-20) G		
<i>Not energy efficient - higher running costs</i>		
England, Scotland & Wales	EU Directive 2002/91/EC	

Floor plan



Location





+44 20 3151 0367

international@johndwood.co.uk

www.johndwood-international.com