



Vera Playa, Almeria

2  2 

£150,000
(€169,000)

Property details





Key features

- **Build Size 78 m**
- **Communal Pool**
- **Water**
- **Electricity**
- **Telephone Possible**
- **Internet Possible**
- **Air Conditioning**
- **Disabled Friendly**
- **Private Terrace**

Attributes

-  **Swimming pool**
- **Apartment**
-  **Near to beach**
-  **Private parking**
-  **Garden**

Vera Playa, Almeria

2  2 

£150,000
(€169,000)

Description

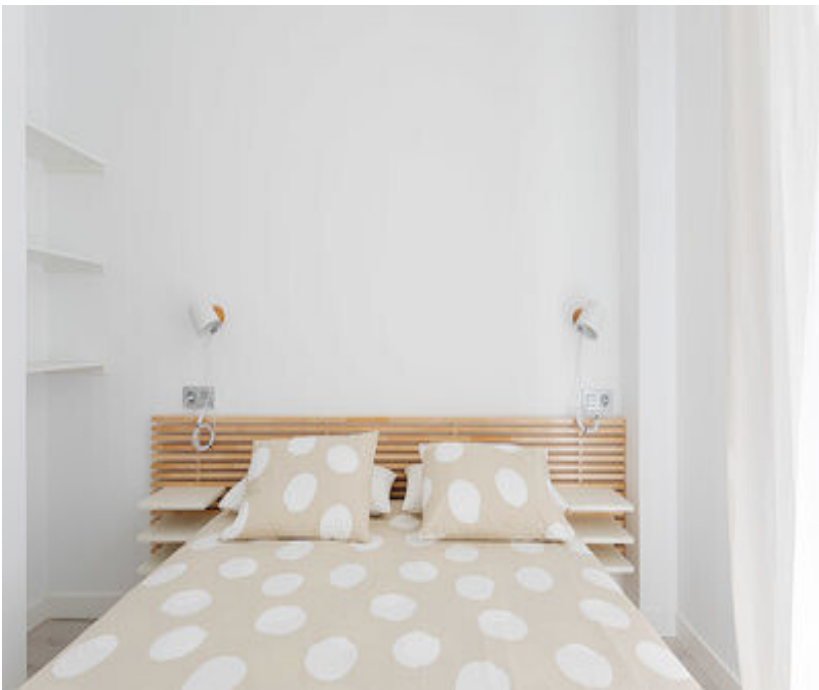
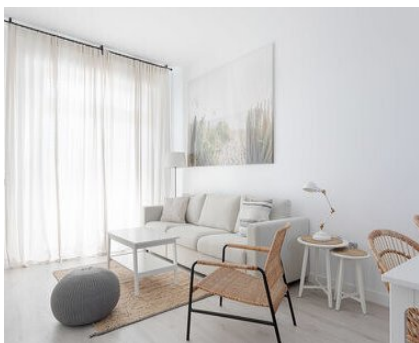
PUERTA DE ORIENTE- PHASE 3 BRAND NEW apartments currently under construction and due for completion SPRING 2026. In collaboration with our Spanish partners, we are delighted to be able to offer you an opportunity to buy a beautiful apartment located in Vera Playa on the Puerta De Oriente complex situated just a 5-minute walk to the beach and local amenities. We are able to offer you a two bedroom, two bathroom including an assigned private parking space. AVAILABLE APARTMENTS FOR SALE: BL6 PP-2: 2 bed / 2 bath - 169,000€ - First Floor - Build size (78m²) BL6 PP-3: 2 bed / 2 bath - 178,000€ - First Floor - Build size (83m²) Please note the prices do not include IVA at 10% These beautiful two bedroom, two bathroom properties are located in a residential area close to the beautiful beaches of Vera Playa, and within a short walk to a small shopping centre with bars and restaurants plus the Aqua Park. The upper floor apartments have terraces of different sizes. The urbanisation is secured with one entrance gate with video control. Each block in the urbanisation has a lift and video entry telephone, and has been specially designed to enable persons with disabilities to move around freely. The properties have fully fitted kitchens with wall and base units and are equipped with electric oven, ceramic hob, extractor fan, sink, and a washing machine. The bathrooms are presented with high quality fittings such as glass walled non-slip showers with sliding doors in the en-suite bathrooms, and large mirrors All bedrooms have built in wardrobes for storage An added feature is that the height of the ceilings is slightly higher than average at 2.95 meters Additional features include;- · Each apartment has been designed using classic Feng Shui principles, with sustainable Architectural designs in relation to the position of the main doors and the general plan of the apartments. · The position of the main entrance, swimming pool and relaxation areas. · The facades are specially prepared with acoustic and thermal insulation · Fixed sunshades placed over the windows that receive most sunlight · Entry doors and hinged windows facilitating cross control ventilation · Folding shutters with adjustable slats that can be directed as required · Aerothermal renewable energy system for hot water production, air conditioning and heat production · Sound insulation between the properties · Special underground structure to prevent the possibility of damp in the ground floor apartments · Combined pavement in private gardens and solariums composed by ceramic or composite slats and artificial grass. For more information or to arrange a viewing please call Spanish property Choice on 0034 950 615 388

















Location





+44 20 3151 0367

international@johndwood.co.uk

www.johndwood-international.com

