



3343 DOVE PARK LN

SAN ANTONIO, TX 78253

\$478,900

150 Years

JOHN D WOOD & CO.

London, Country & International Property

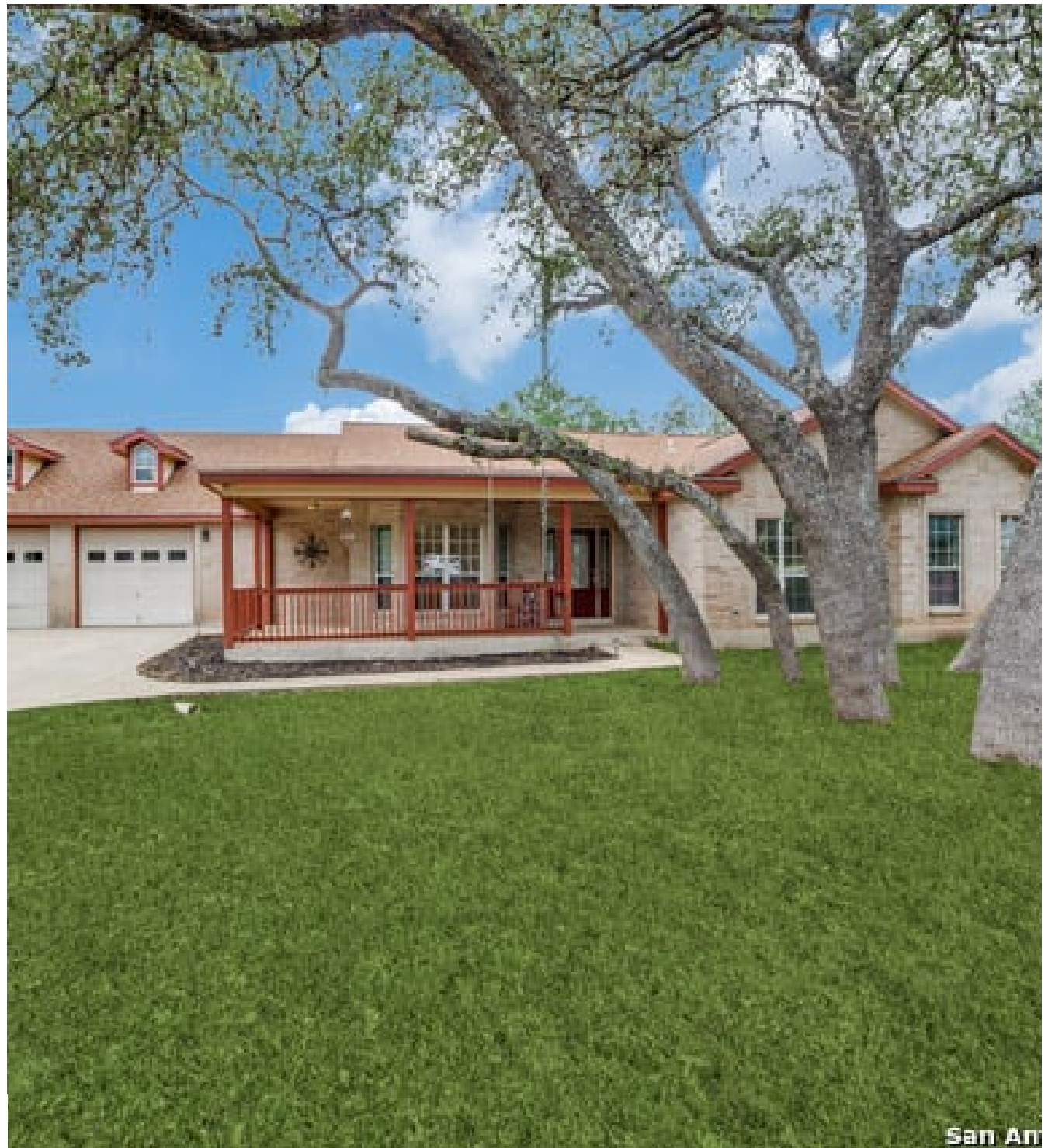
3343 DOVE PARK LN

SAN ANTONIO, TX 78253

PRICED BELOW RECENT APPRAISAL!
Perfect location just inside loop 1604 on 1 acre lot. Experience country-style living in the highly desirable North San Antonio Hills-an established neighborhood featuring mature oak trees and spacious, acreage-sized lots, all within city limits. This custom-built, single-story home offers wonderful curb appeal and sits on approximately one acre. It features 5 bedrooms, 3 and 1/2 baths....(4 bedrooms, 2.5 baths in the main house), a charming front porch, open floor plan, high ceilings, a split-bedroom layout, a spacious kitchen, and an oversized garage.

Basement: None,
Garage Count: 2 Car Garage,
Garage Description: Garage

\$478,900



Additional highlights include a detached 1-bedroom, 1-bath apartment with a kitchenette and walk-in shower-perfect for guests, rental income, or a home office. Enjoy a large covered patio, ample parking for multiple vehicles, boat and RV parking with electricity, and a storage shed/workshop also equipped with electricity. There is no mandatory HOA, making this property ideal for those seeking space, freedom, and flexibility. Whether you're looking for a peaceful retreat or a home with room to grow, this property checks all the boxes. Located in the highly sought-after Northside Independent School District and just minutes from Loop 1604, Highway 151, Highway 90, and Northwest Vista College. Conveniently close to SeaWorld, Alamo Ranch shopping, H-E-B, dining, and military bases. Make an appointment to see today!



