



316 MAPLE DR

HANOVER, PA 17331

\$320,000

150 Years

JOHN D WOOD & CO.

London, Country & International Property

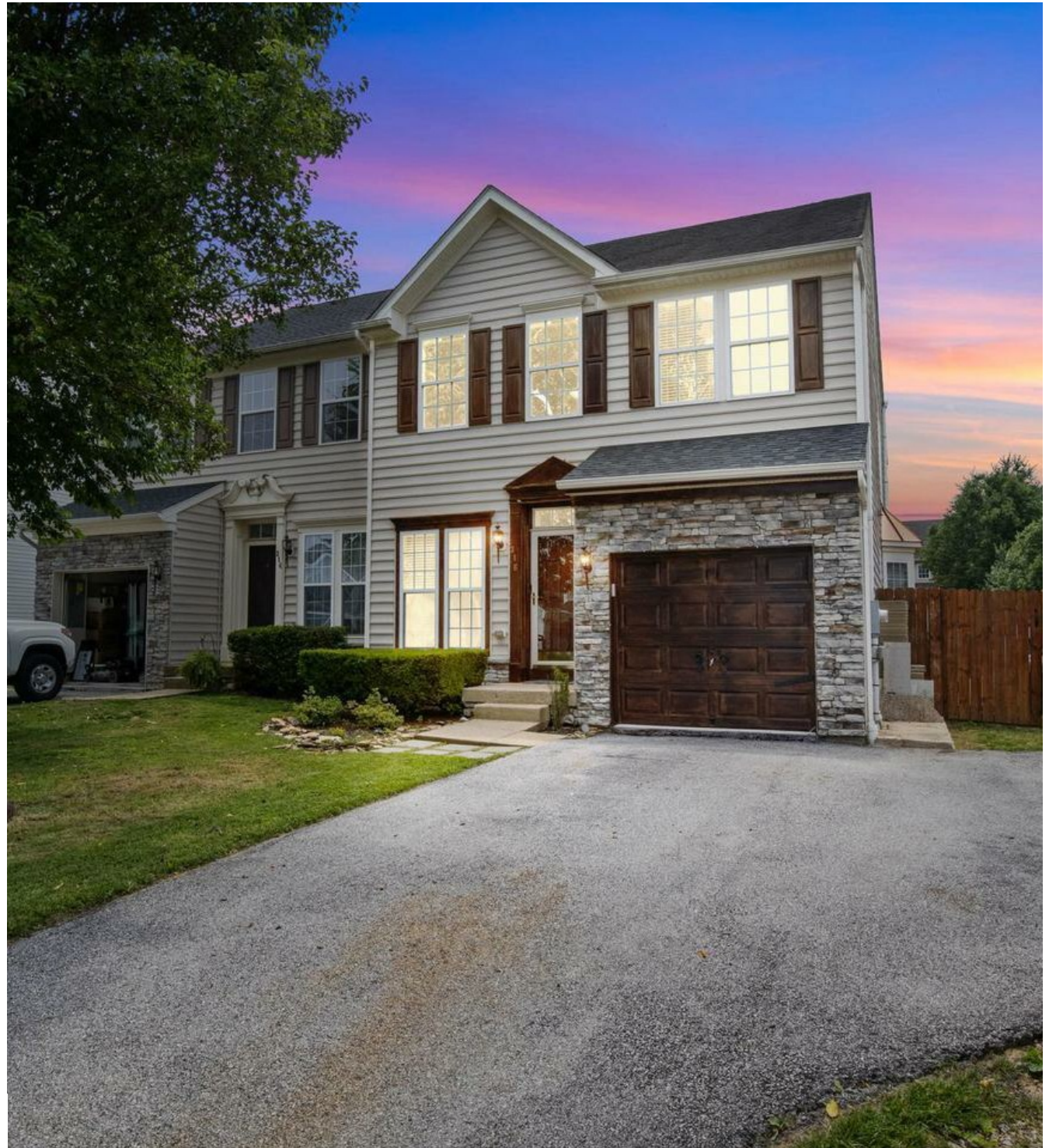
316 MAPLE DR

HANOVER, PA 17331

Experience the epitome of elegance the moment you step into this breathtaking home. Boasting soaring 18-foot cathedral ceilings in both the living and dining rooms, this residence instantly welcomes you with its grandeur and expansive ambiance. Throughout the main level, nine-foot ceilings enhance the sense of space, which includes a luxurious owner's suite complete with a private bathroom for the ultimate retreat. As you ascend to the upper floor, discover two generously sized bedrooms, thoughtfully positioned on either side of a charming and spacious loft, ensuring privacy and tranquility. An additional full bath complements these rooms perfectly.

**Cooling: Central A/C,
Garage Count: 1 Car Garage,
Heating - Fuel Type: Gas,
Heating Type: Forced Air,
Sewer: Public,
Water: City Water**

\$320,000



The finished basement offers versatile spaces, including a substantial office, a flexible area that can be adapted to your needs, and a cozy den, ideal for relaxation and family time. For added convenience, the laundry facilities are also situated on the lower level. The backyard is fully enclosed and secured, featuring a lush green grass area. Do not miss the opportunity to witness this home's splendor firsthand. Arrange your private tour today and prepare to be wowed by the combination of luxury, comfort, and thoughtful details waiting to be discovered in this magnificent home.



