



**170 E END AVENUE UNIT 8EF**

170 E END AVE, NEW YORK, NY 10128

**\$13,500,000**

*150 Years*  
**JOHN D WOOD & CO.**

London, Country & International Property

# 170 E END AVENUE UNIT 8EF

170 E END AVE, NEW YORK, NY 10128

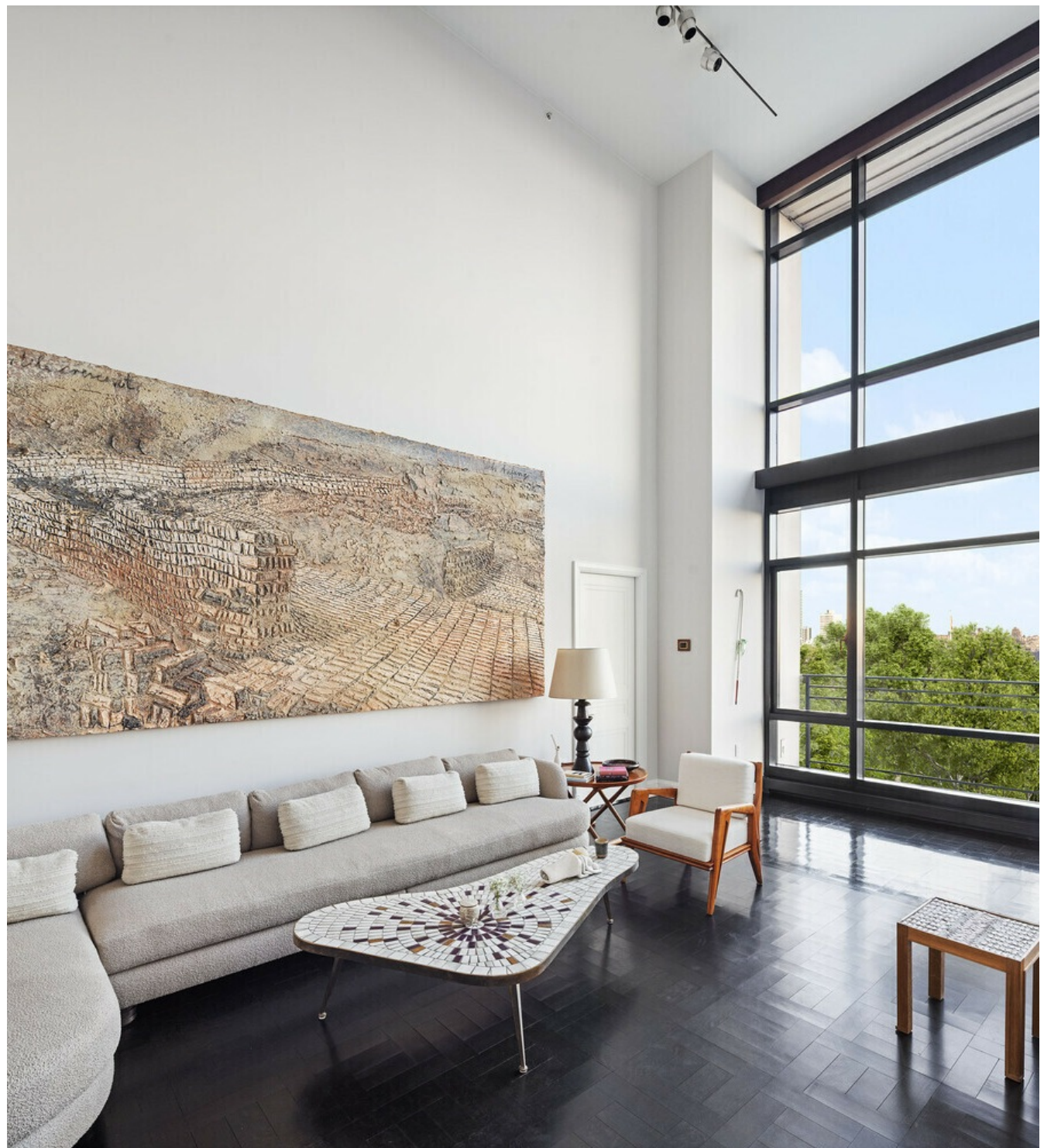
170 East End Avenue, Residence 8E/F is a sophisticated 5,000 square foot, 6+ bedroom, 6+ bathroom duplex with an impressive 2,300 square feet of private outdoor space. This bright, vibrant home is complete with designer finishes, floor-to-ceiling windows and panoramic views of Carl Schurz Park, the East River & beyond from nearly every room. Details Include: A striking, double-height living room with floor-to-ceiling windows, 20' ceiling height, open Eastern views & a wood-burning fireplace. An adjacent foyer/ gallery welcomes guests into the home.

**Fireplace Count: 1 Fireplace,**  
**Cooling: Central A/C,**  
**Special Program: Global Luxury**

**\$13,500,000**



Corner chef's kitchen with custom lacquered cabinetry, premium appliances vented Wolf stove, SubZero refrigerator, dual dishwashers and a spacious dine-in breakfast area with impeccable views. Formal dining room, adjacent to the kitchen, overlooking Gracie Mansion and beyond. Wood-paneled, corner library currently outfitted as a den / interior work out area. Upper-level, king-sized, primary suite with Eastern & Southern views, private balcony, ensuite five-fixture marble bathroom & custom dressing room. In addition to the primary suite, there is a second, king-sized bedroom with ensuite bathroom on the ninth floor-- An arrangement that easily allows for dual primary suites. Four additional bedrooms & three full bathrooms (two ensuite) complete the private quarters of the eighth floor. The home's current configuration allows for four distinct workspaces in addition to the existing six bedrooms. These include a large home office with wet bar & adjacent W/D, two separate eighth floor studies and an open office on the ninth floor landing with river views overlooking the double-height, formal living room.



2,300 SF of private outdoor space including a noteworthy bi-level landscaped terrace with multiple seating areas, mature planted arbor, custom lighting, irrigation and a wraparound extension with an outdoor fitness area complete with a cold plunge. Additionally all East-facing rooms across both floors have private en-suite terraces. Residence 8EF is complete with a laundry room, two eighth floor powder rooms, an architectural wood staircase, temperature-controlled wine storage for 150 bottles & a sauna. Features include floor-to-ceiling windows, Venetian plaster walls, handsome dark-stained hardwood floors, 10' ceiling heights and electric shades throughout. Private storage included. Designed as a collaboration between SLCE architects and Peter Marino, 170 East End Avenue is the preeminent luxury condominium at the apex of Carl Schurz Park on the Upper East Side. Located between East 87th & 88th Streets, this sleek, white glove building comprises 96 impeccable homes across 19 stories. Residents of this full-service, concierge building enjoy over 12,000 square feet of amenities including a state-of-the-art fitness center, squash court, dance/ yoga studio, pilates, billiards room, golf simulator, screening room/ theatre, children's rooms art room, playroom, arcade and a basketball court.



Additionally, on-site parking is available through a third party vendor. Pets welcome. This is a co-exclusive listing with Compass.



