



Virtually Staged

580 PARK AVENUE UNIT 10A

580 PARK AVE, NEW YORK, NY 10065

\$5,500,000

150 Years

JOHN D WOOD & CO.

London, Country & International Property

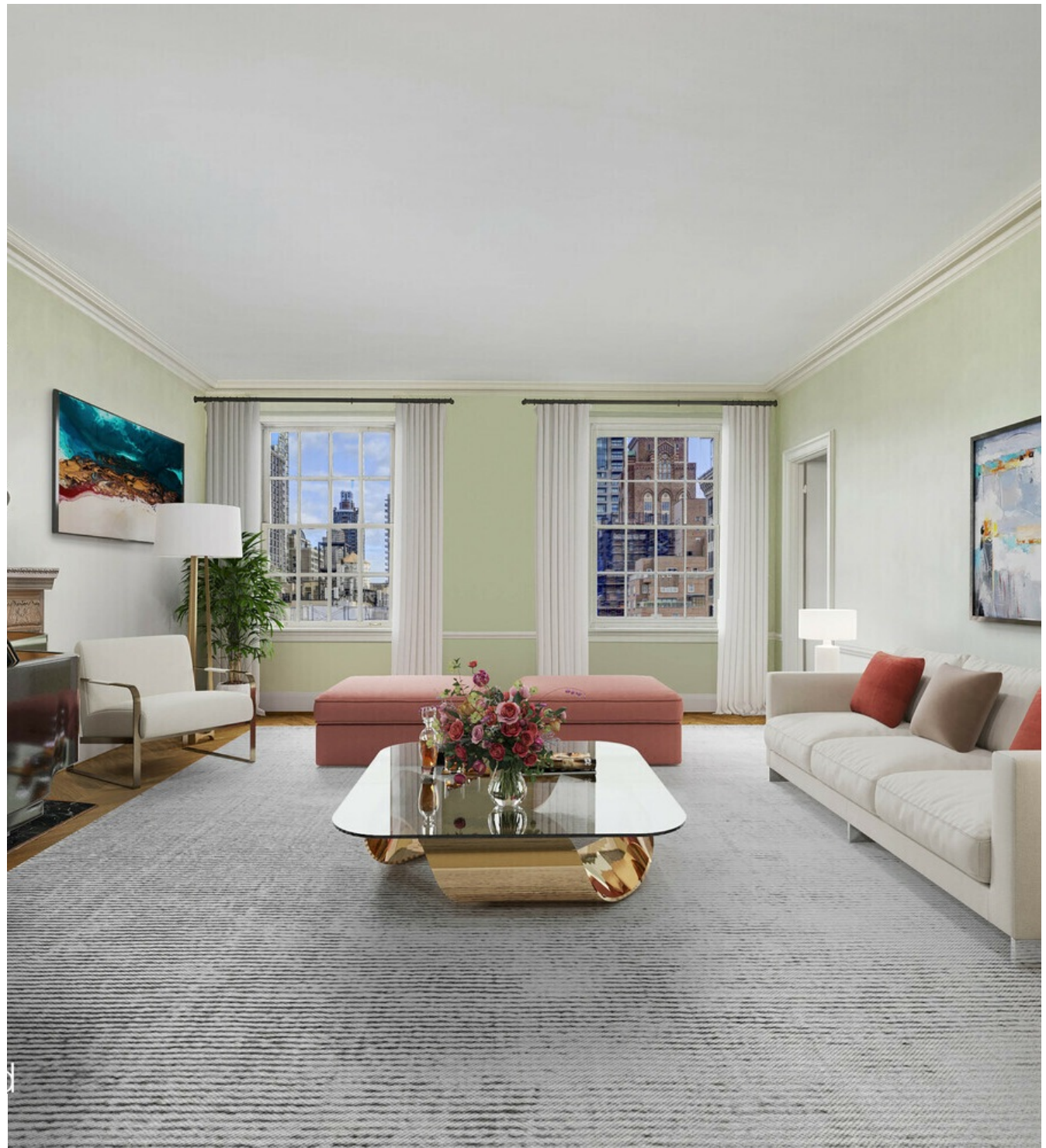
580 PARK AVENUE UNIT 10A

580 PARK AVE, NEW YORK, NY 10065

Park Avenue Elegance at its Finest: This exceptional estate condition home (photos are virtually staged) is the largest apartment in the highly coveted A line with the addition of a Park Avenue facing bedroom and bathroom which was purchased from the neighboring apartment. With 9ft + ceilings, original herringbone floors and sixteen windows facing all four directions including open western and eastern exposures, this pre-war apartment has five bedrooms and four bathrooms and is situated in one of Park Avenue's most distinguished white-glove cooperatives.

**Fireplace Count: 1 Fireplace,
Special Program: Global Luxury**

\$5,500,000



A semi-private elevator landing leads to a grand gallery flanked by a 25ft living room with a wood burning fireplace (which has not been used in over ten years) and oversized picture windows with glorious open views across Park Avenue and beyond. Opposite, the impressively scaled 20ft formal dining room seats twelve and commands open views west with a Central Park vista. The expansive bedroom wing wraps along two corners and three exposures across Park Avenue, 63rd Street and west over to Central Park. The corner bedroom facing east and south has views over Park Avenue. The home's largest bedroom overlooks 63rd street and has deep walk-in closets and abundant space for a sitting area. A third bedroom has a corner exposure over 63rd street and a view west over townhouses with a beautiful vista of Central Park. The additional Park Avenue facing bedroom suite, purchased from the 'B' line, is located apart from the bedroom wing, making it the ideal guest suite or primary bedroom. The large kitchen has a western exposure, a walk-in pantry, a washer/dryer and an abundance of storage and counter space. A full-size fifth bedroom and windowed bathroom is located just off the kitchen and has a western view towards the park. Built in 1923 by renowned architect James E.R.



Carpenter, 580 Park Avenue is one of the finest examples of Neo-Renaissance architecture in the city and commands an entire western block front on Park Avenue. A full service, white-glove cooperative, replete with an exquisite and grand marble lobby, residents enjoy a 24-hour doorman, elevator attendants and a live-in resident manager. Pets and pied-a-terre are permitted. Maximum financing not to exceed \$1,000,000. A 3% flip tax is paid by the purchaser. Use of a building owned private storage cage conveys with the sale Some of the photos are virtually staged for presentation purposes only.



