



155 MYRTLE AVENUE

155 MYRTLE AVE, IRVINGTON, NJ 07111

\$549,000

150 Years

JOHN D WOOD & CO.

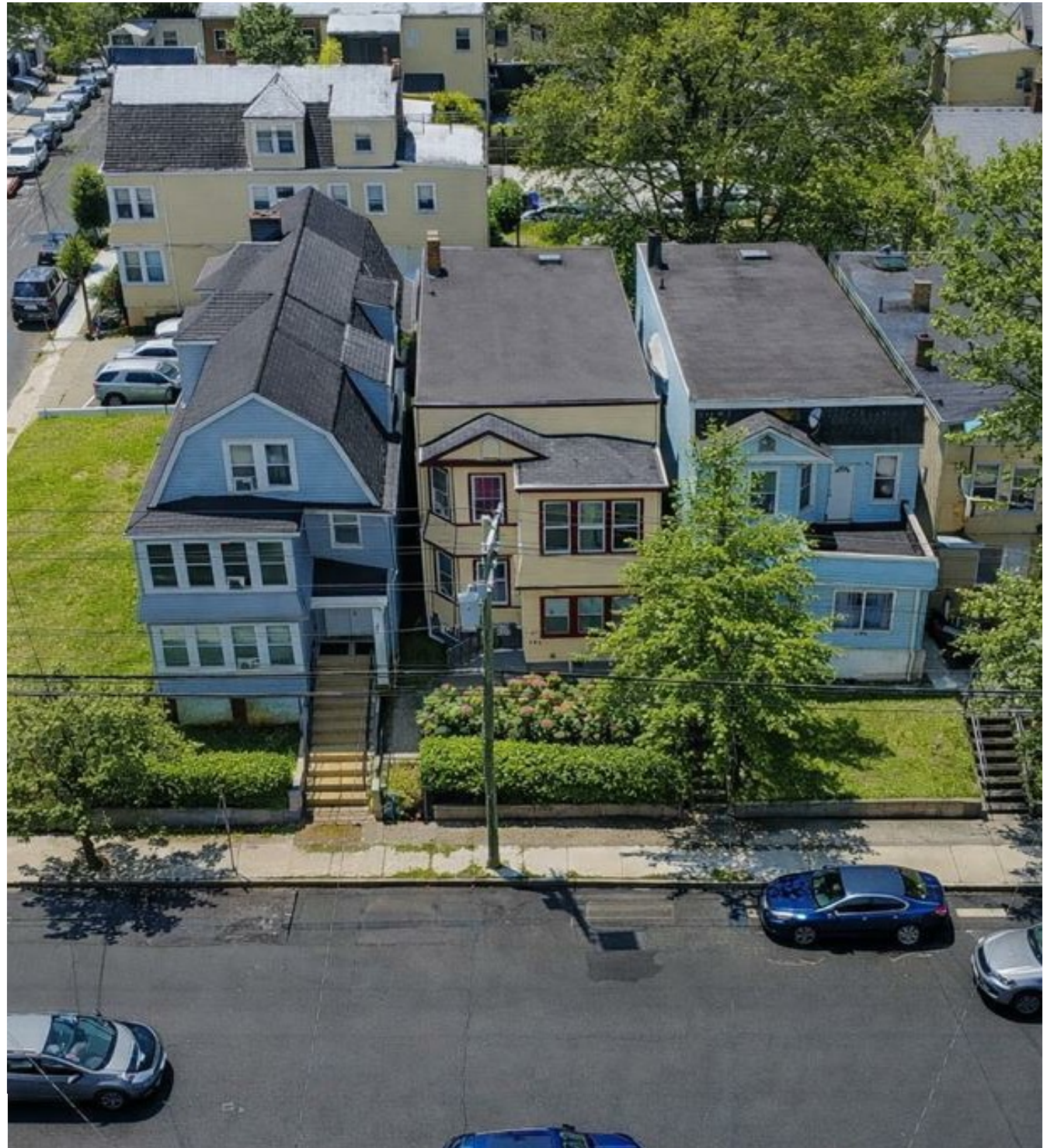
London, Country & International Property

155 MYRTLE AVENUE

155 MYRTLE AVE, IRVINGTON, NJ 07111

Well maintained two family home in Irvington, NJ with strong rental income potential and spacious layouts. The first floor unit offers 3 bedrooms, 1 full bath, and direct access to a private backyard perfect for pets, play, or outdoor enjoyment. The second floor unit features 4 bedrooms and 1 full bath. Both units are month-to-month, ideal for owner-occupants or investors. Separately metered utilities and a partially finished basement provide added value with potential for laundry and storage, and off street parking..

\$549,000



Located near major highways to NYC, public transportation, schools, shopping, and local amenities, this Irvington NJ multi-family property is ideal for buyers looking to live in one unit and rent the other or add a high demand income property to their portfolio.



