



328 HILLSIDE AVE

LIVINGSTON, NJ 07039

\$1,550,000

150 Years

JOHN D WOOD & CO.

London, Country & International Property

5411331

328 HILLSIDE AVE

LIVINGSTON, NJ 07039

Resort-style comfort meets smart upgrades in this exceptional 5-bedroom, 4.1-bath home offering approx. 4,160 sq ft of finished living space, including a leisure room ideal as a 6th bedroom. This beautifully maintained home blends classic warmth with modern efficiency in one of Livingston's most desirable locations. Expansive living areas are perfect for entertaining and relaxing, highlighted by four fireplaces (three gas, one wood-burning). The finished lower level offers flexible space for recreation, work, guests, or fitness, complete with a 4-person sauna.

Heating - Fuel Type: Gas,
Garage Count: 1 Car Garage,
Sewer: Public,
Pool Description: Pool,
Fireplace Count: 4+ Fireplaces,
Water: City Water

\$1,550,000



The primary suite features a cedar closet for added luxury and storage. The kitchen is equipped with a 6-burner Wolf stove, XL SubZero refrigerator and freezer, double wall oven, dishwasher, and trash compactor. Step outside to a private, fenced-in backyard designed for year-round enjoyment: a covered swim spa pavilion, fire pit with 360-degree seating, 26-ft greenhouse with five raised beds, full sprinkler system, and rubber-surfaced playground with updated lifted playhouse and basketball hoop. Built for efficiency and resilience with a Tesla solar system and four backup batteries, whole-house water filtration, two-zone HVAC, and a 2020 roof. Close to top schools, parks, houses of worship, and commuting routes.

Bedroom 19.0ft x 16.0ft
 Bedroom 13.0ft x 20.0ft
 Bedroom 12.0ft x 16.0ft
 Bedroom 12.0ft x 11.0ft
 Dining Room 15.0ft x 22.0ft
 Kitchen 12.0ft x 24.0ft
 Living Room 13.0ft x 20.0ft

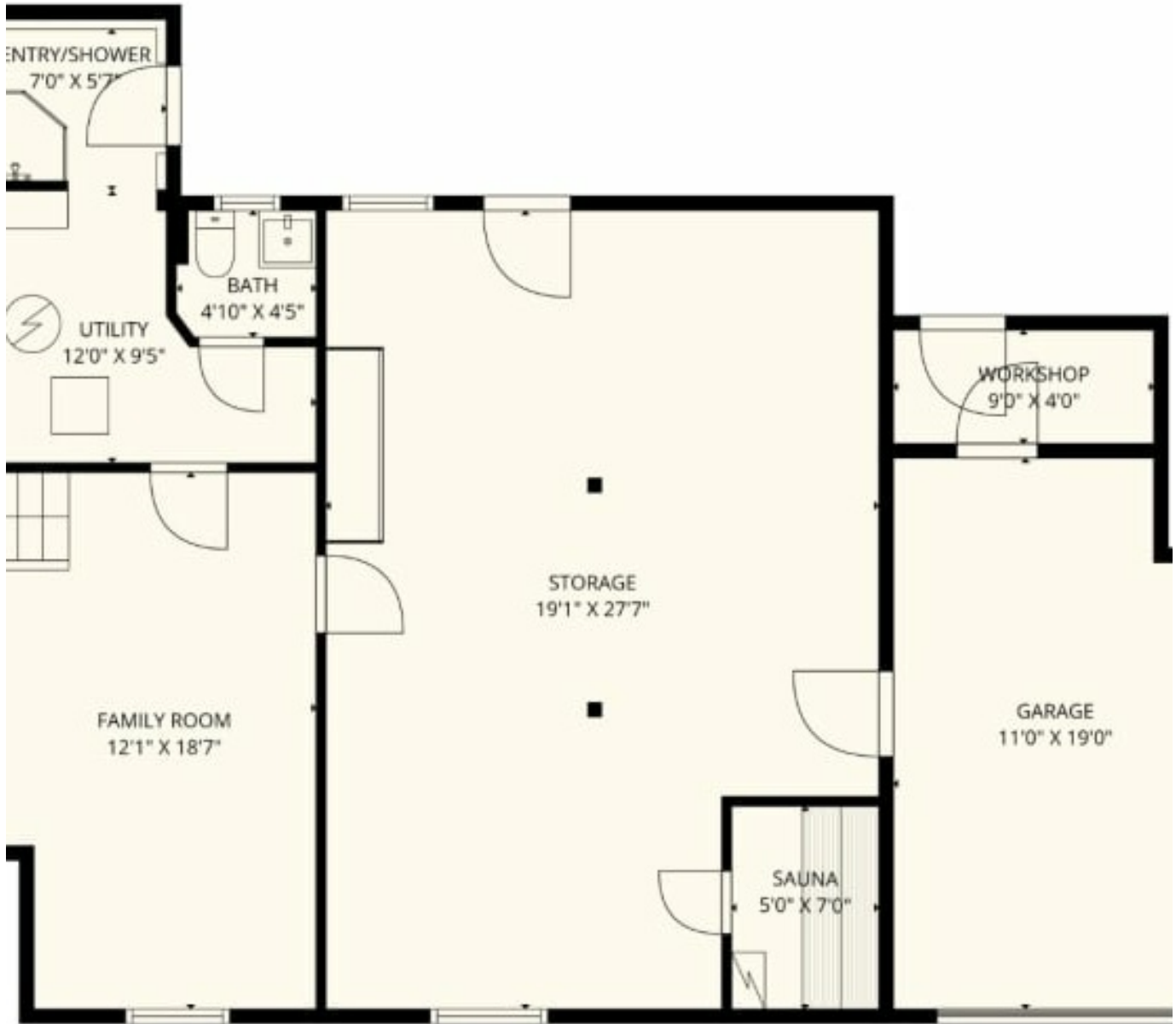
328 Hillside Avenue Livingston, NJ 07039



TOTAL: 4232 sq. ft

1st floor: 937 sq. ft, 2nd floor: 1121 sq. ft, 3rd floor: 1165 sq. ft, 4th floor: 1009 sq. ft
 EXCLUDED AREAS: GARAGE: 203 sq. ft, PORCH: 267 sq. ft, FIREPLACE: 22 sq. ft,
 WALLS: 312 sq. ft

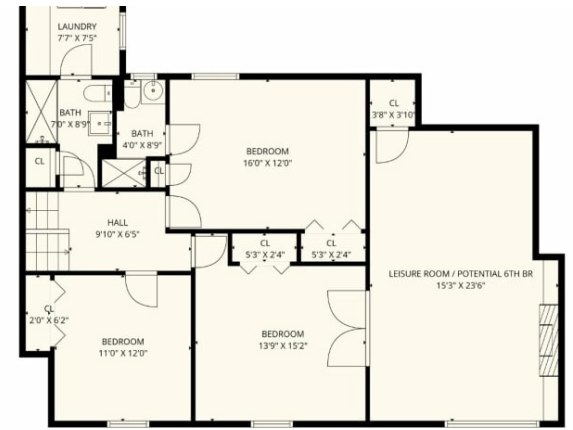
MEASUREMENTS ARE ACCURATE BUT NOT GUARANTEED FOR LEGAL USE



TOTAL: 4232 sq. ft
 1st floor: 937 sq. ft, 2nd floor: 1121 sq. ft, 3rd floor: 1165 sq. ft, 4th floor: 1009 sq. ft
 EXCLUDED AREAS: GARAGE: 203 sq. ft, PORCH: 267 sq. ft, FIREPLACE: 22 sq. ft,
 WALLS: 312 sq. ft

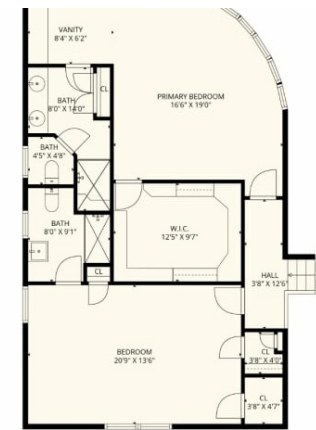
Low

MEASUREMENTS ARE ACCURATE BUT NOT GUARANTEED FOR LEGAL USE



TOTAL: 4232 sq. ft
 1st floor: 937 sq. ft, 2nd floor: 1121 sq. ft, 3rd floor: 1165 sq. ft, 4th floor: 1009 sq. ft
 EXCLUDED AREAS: GARAGE: 203 sq. ft, PORCH: 267 sq. ft, FIREPLACE: 22 sq. ft,
 WALLS: 312 sq. ft

Second Floor



TOTAL: 4232 sq. ft
 1st floor: 937 sq. ft, 2nd floor: 1121 sq. ft, 3rd floor: 1165 sq. ft, 4th floor: 1009 sq. ft
 EXCLUDED AREAS: GARAGE: 203 sq. ft, PORCH: 267 sq. ft, FIREPLACE: 22 sq. ft,
 WALLS: 312 sq. ft

Third Floor

