



750 KAHEKA STREET UNIT 404

750 KAHEKA ST, HONOLULU, HI 96814

\$449,000

150 Years

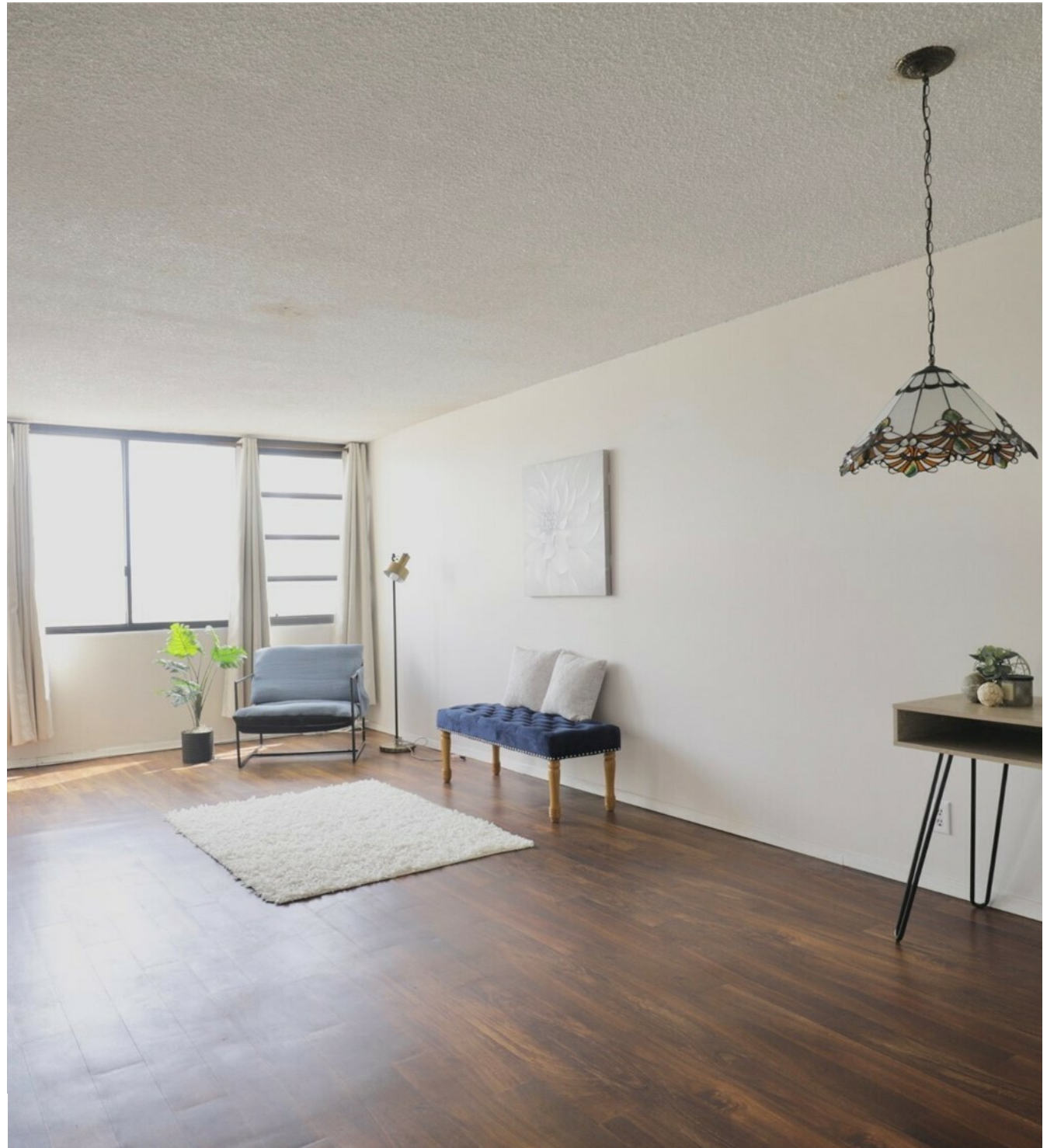
JOHN D WOOD & CO.

London, Country & International Property

750 KAHEKA STREET UNIT 404

750 KAHEKA ST, HONOLULU, HI 96814

Exceptional opportunity in the heart of Honolulu! This rarely offered unit 404 at Kapiolani Belaire is priced to sell and ready for your vision. Situated in a prime location across from Don Quijote with unmatched access to shopping, dining, and transportation, this classic Honolulu condo delivers tremendous upside for investors or owner-occupants seeking value and potential.



\$449,000

