

16990 EARLY LIGHT DRIVE

16990 EARLY LIGHT DR, COLORADO SPRINGS, CO 80908

\$960,000

150 Years

JOHN D WOOD & CO.

London, Country & International Property

16990 EARLY LIGHT DRIVE

16990 EARLY LIGHT DR, COLORADO SPRINGS, CO 80908

Luxury to be built custom home in the beautiful Winsome Community! Situated on nearly 3 acres in the scenic Winsome neighborhood, this to-be-built custom home offers the perfect blend of luxury, comfort, and personalized design. Presented by an exceptional builder known for high-quality construction and premium finishes, this is your opportunity to build *The Ridgway*-a stunning farmhouse-style home. Or you can even bring your own design, and we'll bring it to life. Step onto the charming covered front porch and enter through an open foyer featuring vaulted ceilings and gorgeous luxury vinyl floors that flow throughout much of the main level.

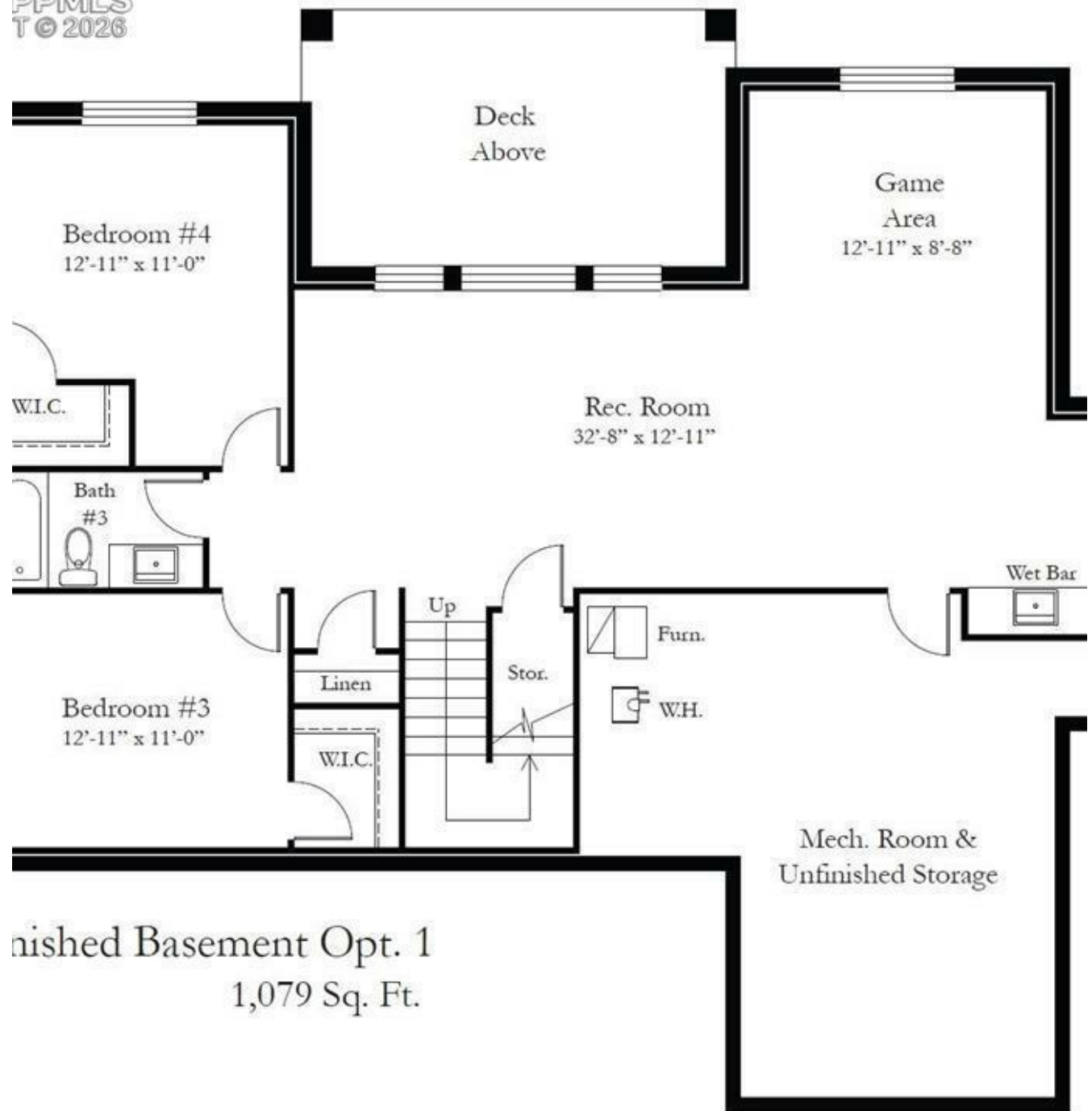
Garage Count: 3 Car Garage,
Cooling: Central A/C,
Water: Well,
Heating Type: Forced Air

\$960,000



The thoughtfully designed floor plan includes a spacious great room with beamed ceiling, a beautiful stone-surround fireplace with wood mantle, and seamless connection to the gourmet kitchen. The kitchen is a true centerpiece, featuring a large island with bar seating, soft-close cabinets and drawers, granite/quartz countertops, stainless steel appliances, and a generous walk-in pantry. Adjacent to the kitchen is the dining area with walk-out access to a covered deck-perfect for enjoying Colorado's breathtaking evenings. The private owner's suite offers a peaceful retreat with a coffered ceiling, sitting window, private deck access, an expansive en-suite bath with walk-in shower, and a large walk-in closet. The main level also includes a second en-suite bedroom w/ full bath, powder room, and laundry room with convenient access to the oversized three-car garage. Downstairs, the garden-level basement is flooded with natural light thanks to 9-foot foundation walls. The basement can be finished as a guest or in-law suite or two additional bedrooms, a full bath, and a spacious storage room with laundry hook-ups.

PPMLS
T © 2026



Combine the exceptional craftsmanship of this home with all that Winsome has to offer-miles of hiking, biking, and riding trails, wide open spaces, and a welcoming community fire pit.

PMLS
© 2026



Finished Basement Opt. 2
750 Sq. Ft.



Main Floor
1,695 Sq. Ft.

