



2

WOODLANDS TERRACE, RODENHURST ROAD, LONDON,
SW4

£1,250,000

150 Years
JOHN D WOOD & CO.

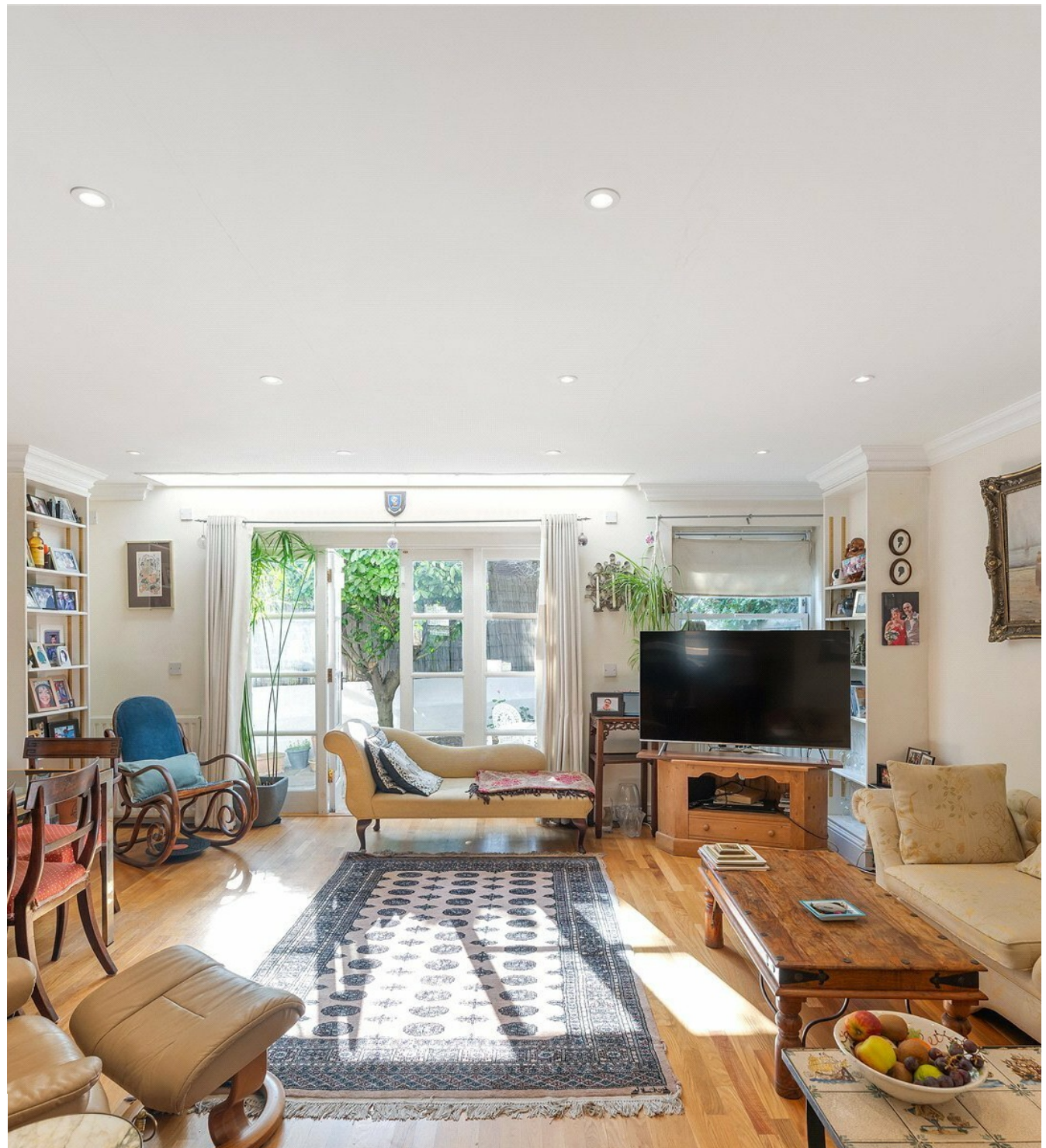
London, Country & International Property

2

WOODLANDS TERRACE, RODENHURST ROAD, LONDON, SW4

A bright and rarely available five-bedroom townhouse with off-street parking and a south facing private garden, located on the popular Rodenhurst Road in the Abbeville Village. The well-balanced and neutral accommodation of 1519 Sq Ft is arranged over three floors and is offered to the market with no onward chain. The ground floor is one large open plan kitchen and reception room with doors into the garden to the rear, ample space to dine and relax and the kitchen to the front. On the first floor is a large double bedroom to front with en-suite and fitted wardrobes and to the rear another large double bedroom with fitted wardrobes and a family bathroom suite.

£1,250,000



Arranged over the upper floor to the front is a further double bedroom with en-suite and fitted wardrobes and to the rear two further double bedrooms. There is a ground floor cloakroom found in the entrance hall and a large loft area making ideal storage space. Woodlands Terrace is in a peaceful, leafy enclave, located at the Clarence Avenue end of Rodenhurst Road. The many cafes, restaurants and shops in the Abbeville Village and at Clapham Common are within a short walk, along with Clapham Common underground and Clapham High overground stations. Reference CPH250146



