



11

ATHERTON STREET, LONDON, SW11

£6,500

150 Years
JOHN D WOOD & CO.

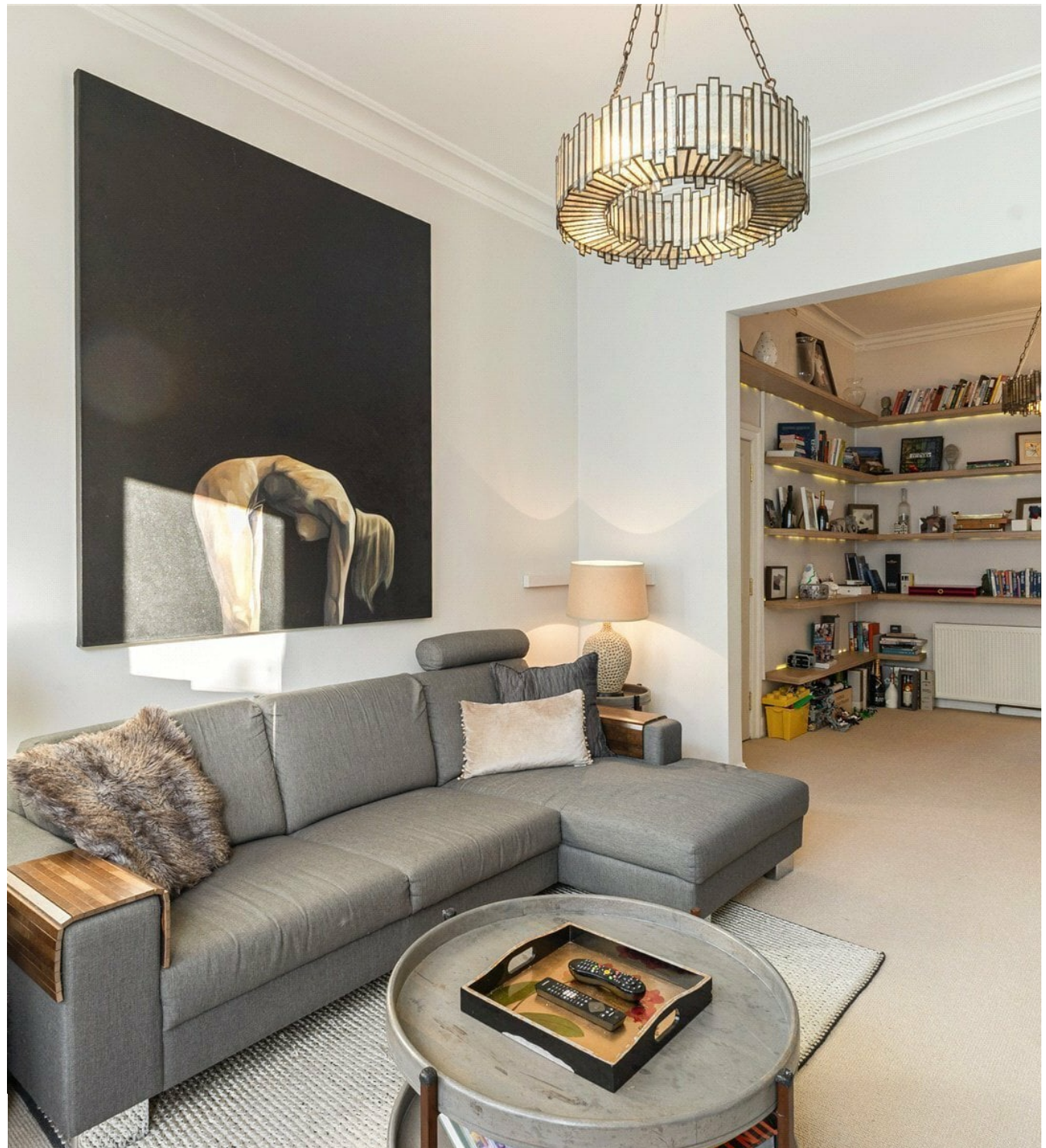
London, Country & International Property

11

ATHERTON STREET, LONDON, SW11

A striking and substantial three-storey, four-bedroom residence offering beautifully proportioned accommodation with high ceilings throughout, thoughtfully designed for both refined living and stylish entertaining. The impressive kitchen, featuring elegant stone worktops, bespoke cabinetry, and a statement central island, forms the heart of the home and opens seamlessly via full-width bi-folding doors onto a meticulously maintained, low-maintenance garden, creating an exceptional indoor-outdoor setting ideal for hosting and everyday living alike.

£6,500



Positioned on the highly regarded Atherton Street, the property enjoys excellent transport links north of the river via bus routes over Battersea Bridge and is moments from a vibrant array of shops, restaurants, and the outstanding leisure amenities of Battersea Park.

