



77

WARRINER GARDENS, LONDON, SW11

£16,000

150 Years

JOHN D WOOD & CO.

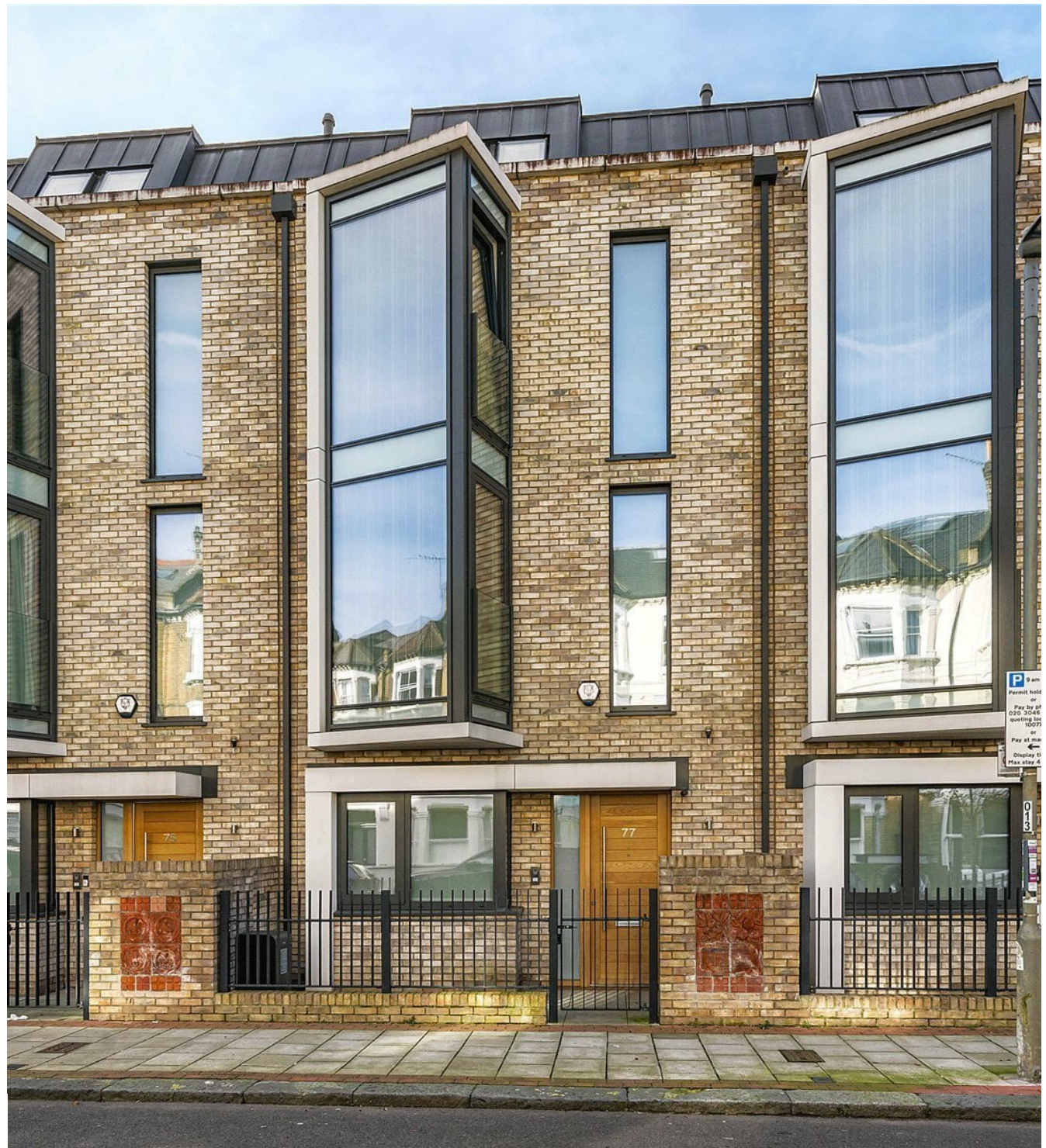
London, Country & International Property

77

WARRINER GARDENS, LONDON, SW11

An immaculately presented family home with private parking moments from Battersea Park. The house has been thoughtfully designed for family life and enjoys a wonderful balance of accommodation set just under 3,000 sq. ft over five floors. Warriner Gardens is situated behind Prince of Wales Drive, moments away from the wonderful open spaces and varied leisure facilities of Battersea Park. The Battersea Power Station development, including the recently opened Northern Line extension, is within walking distance, providing restaurants, bars, cinema, gym, shops and access to the river bus.

£16,000



Local transport is provided by bus routes on Queenstown Road and Overland train services are provided by Battersea Park Station and Queenstown Road station.



