



58

BOURNE STREET, BELGRAVIA, SW1W

£2,750,000

150 Years
JOHN D WOOD & CO.

London, Country & International Property

58

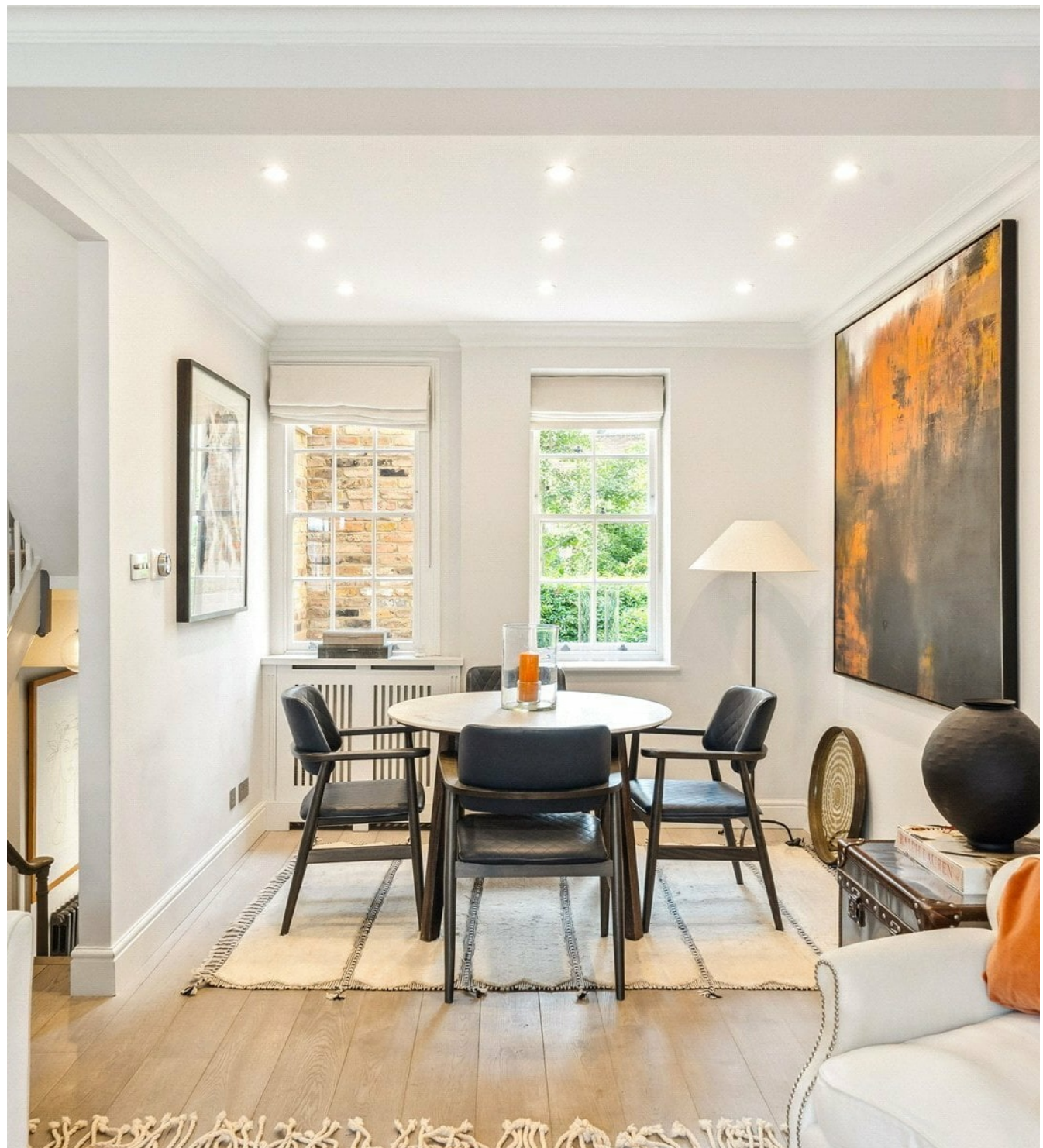
BOURNE STREET, BELGRAVIA, SW1W

A beautifully refurbished two-bedroom, two-bathroom house of approximately 1,200 sqft on Bourne Street in the heart of Belgravia, moments from Sloane Square. Thoughtfully designed by an interior designer, the property blends period character with high-spec modern living, including wooden flooring, solid wood shutters, and a bright reception room with gas fireplace and dining area. Smart home technology allows remote control of heating and appliances, with underfloor heating in both bathrooms and the utility room. The lower ground floor comprises a double bedroom with a luxurious bathroom featuring both a walk-in shower and bathtub.

£2,750,000



A half landing leads to a sunny private garden and utility area with access to a rear garage, ideal for storage. The kitchen, positioned on the upper half landing, has been extended in height to create a bright and airy space. The first floor is dedicated to a generous principal suite with built-in wardrobes and a further bathroom with separate bath and shower. Reference BEL140259 RAISED GROUND FLOOR Reception Room Fireplace with gas coal fire, mantelpiece, polished marble slips and hearth. Fitted mirrored alcove shelving with lights. Corner shelving. Sash window to Bourne Street. Dining area with fitted unit with marble top, bespoke computer desk, fitted shelves above and cupboard. Two sash windows overlooking patio area to rear. Recessed ceiling lights. Half Landing Kitchen/Breakfast Room Range of wall and base units. Work surface incorporating 1½ bowl sink. Appliances include induction hob with extractor over, double oven, fridge/freezer and dishwasher. Microwave oven. Fitted banquette. Heated towel rail. Sash windows to side and rear. Recessed ceiling lights. Loft hatch. FIRST FLOOR Cupboard with shelving on the landing and loft hatch above. Bedroom Principal bedroom with fitted cupboards providing hanging and storage space.



Further high level cupboards and mirror fronted fitted cupboard and dressing area. Sash window to front. Door to . . . Shower Room En-Suite Shower cubicle with 'rain' shower and adjustable height shower attachments. Twin wash basins with drawers below and mirror fronted medicine cabinets, with lights, above. WC with concealed cistern. Heated towel rails. Sash window to rear with low level cupboard below. Ceramic tile floor with underfloor heating. LOWER GROUND FLOOR Understairs storage cupboard. Half Landing Door to patio garden. Door to . . . Garage With remote controlled up-and-over door and housing Vaillant boiler Bedroom Double room with mirror fronted fitted cupboards, further cupboard with glass doors and dressing table unit. Fitted fold-down double bed/desk and integrated drawers. Double doors to cobbled front area. Under steps storage vault housing gas and electric meters and water softener. Cloakroom/WC Wash basin with cupboard below and mirror above. WC with concealed cistern. Washing machine with shelf above. Fitted cupboards. Sash window to patio area. Bathroom Bath with adjustable height hand-held shower. Wash basin set into vanity unit with drawers and fitted wall mirror above with light and cupboards. Heated towel rails.



WC with concealed cistern. Underfloor heating. Patio Garden Paved patio garden with border with mature shrubs and pace for table. Separate refuse store. Door to Ormonde Place.



