



38

BATHGATE ROAD, LONDON, SW19

£3,300,000

150 Years

JOHN D WOOD & CO.

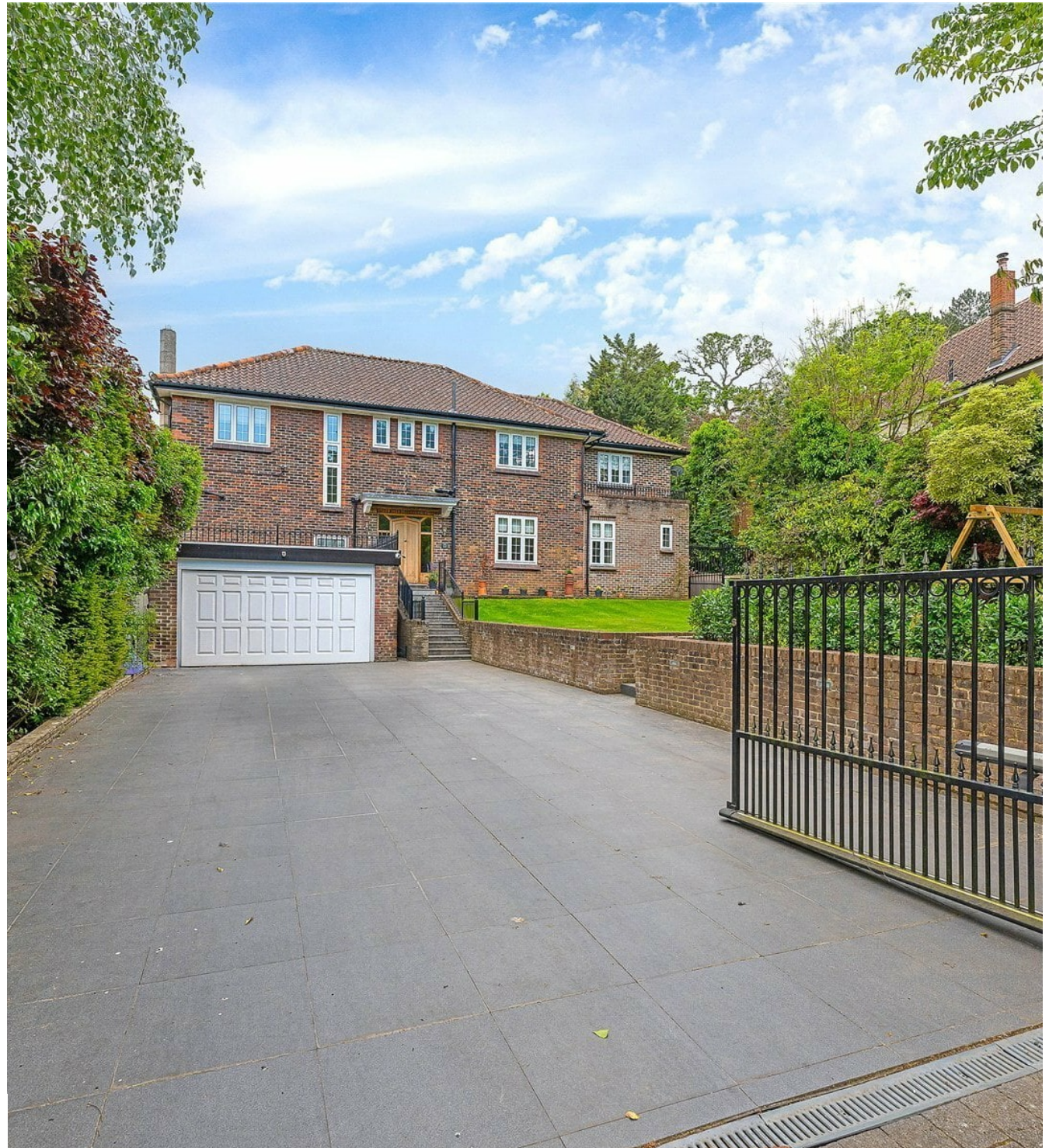
London, Country & International Property

38

BATHGATE ROAD, LONDON, SW19

Set in one of Wimbledon's most sought after residential roads, this well presented family home offers generous lateral accommodation and an excellent balance of living and bedroom space. Ideally positioned close to Wimbledon Common and the All-England Lawn Tennis Club, the property also benefits from convenient access to a selection of highly regarded local schools. The welcoming entrance hall leads to two elegant reception rooms, perfect for both formal entertaining and everyday living. To the rear, a spacious dining room, kitchen, and adjoining family room create a superb open-plan area, ideal for modern family life.

£3,300,000



A study/bedroom five on the ground floor provides valuable flexibility for home working or guests. On the first floor, the main bedroom suite features an en suite bathroom, dressing room, and private balcony overlooking the gardens. There are three further bedrooms, complemented by two additional bath/shower rooms, providing excellent accommodation for family and visitors. The property enjoys both front and rear gardens, offering attractive outdoor space for relaxation and entertaining. A rare opportunity to acquire a versatile home in a prestigious location, moments from green open spaces and world class sporting amenities Reference WIM130178



