



135 JASMINE LANE

135 JASMINE LN, PINEHURST, NC 28374

\$1,494,725

150 Years

JOHN D WOOD & CO.

London, Country & International Property

135 JASMINE LANE

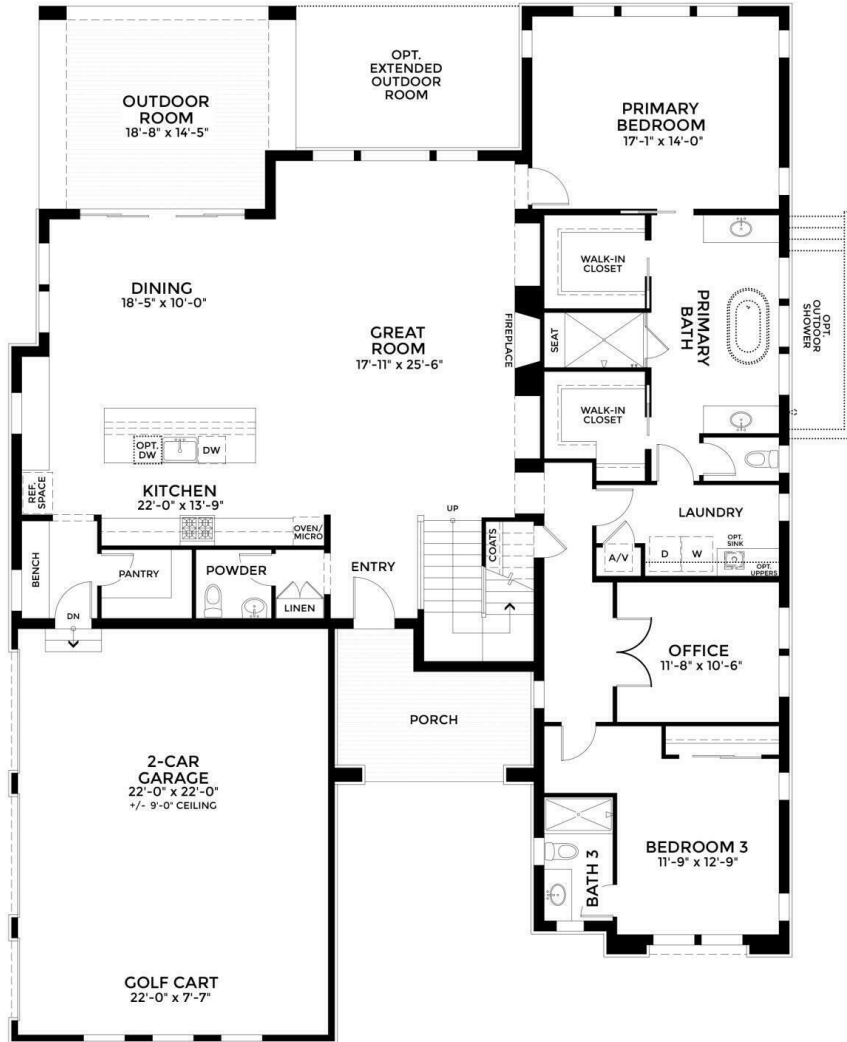
135 JASMINE LN, PINEHURST, NC 28374

This inviting 3,819-square-foot, two-story floorplan is designed for those who love to entertain and welcome generations of family. From the moment you step into the entryway, the home's open, flowing design is evident. The great room at the back of the house connects seamlessly with an enviable kitchen and a bright casual dining space, creating a flexible, modern gathering area without the need for a spacious dining room. With four bedrooms--including a bonus room that can serve as a fifth--plus an optional outdoor kitchen and generous storage, this home offers abundant space for entertaining and making lasting memories.

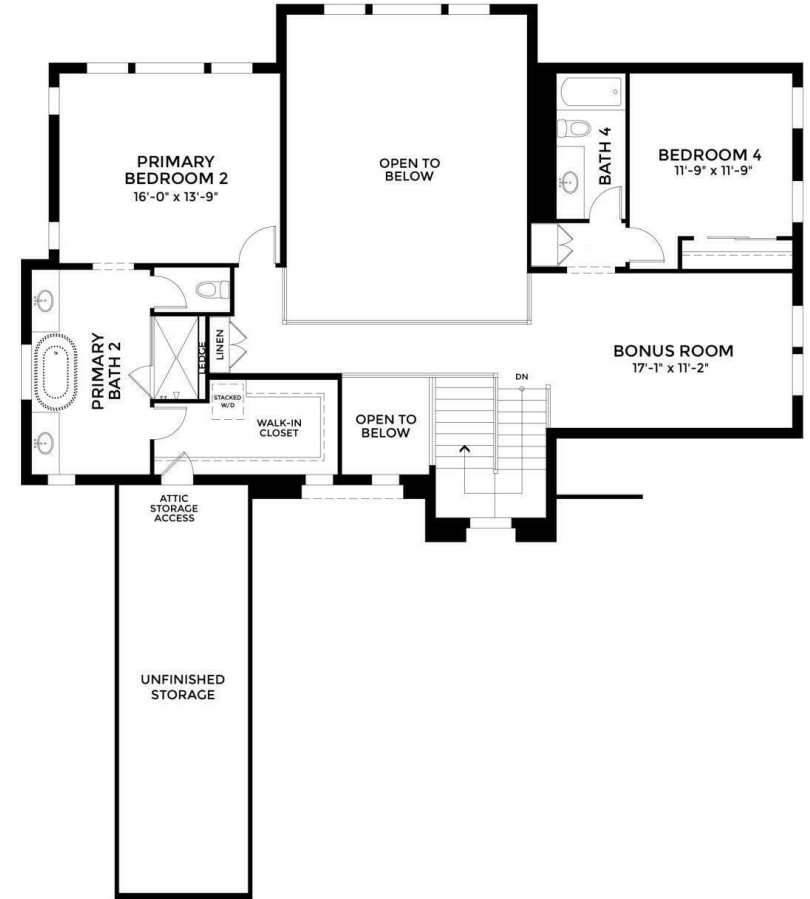
Basement: None,
Garage Count: 2 Car Garage,
Age: New Construction,
Garage Description: Garage

\$1,494,725





FIRST FLOOR



SECOND FLOOR