



385

**385 PINEHURST TRACE DRIVE**

385 PINEHURST TRACE DR, PINEHURST, NC 28374

**\$365,000**

*150 Years*

**JOHN D WOOD & CO.**

London, Country & International Property

## 385 PINEHURST TRACE DRIVE

385 PINEHURST TRACE DR, PINEHURST,  
NC 28374

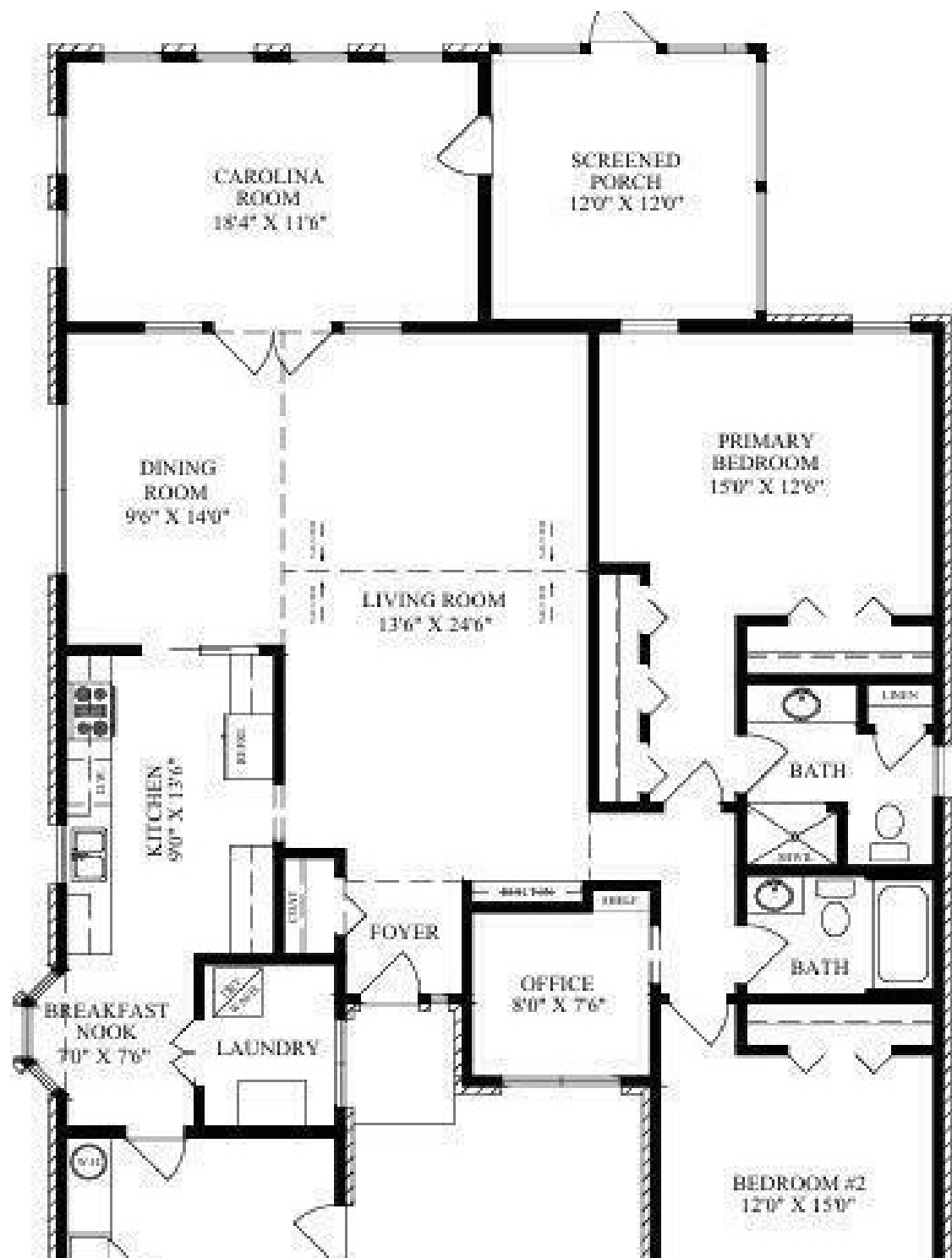
Welcome to this all-brick, single-level home in the heart of Pinehurst. Recently updated and move-in ready, this home is full of natural light and has a comfortable layout. It features two bedrooms, an office, a bright Carolina room, a screened porch, and a one-car garage with a full wall of built-in storage cabinets. The spacious primary suite includes plenty of closet space and a remodeled bathroom. The kitchen shines with new quartz countertops, pull-out drawers, and a large window over the sink that brings in beautiful sunlight.

**Basement: None,**  
**Garage Count: 1 Car Garage,**  
**Garage Description: Garage**

**\$365,000**



Recent updates include new LVP flooring, fresh neutral paint throughout, carpet, updated countertops in the kitchen and primary bath, and new light and plumbing fixtures too. Outside, enjoy a private backyard with no neighbors behind you. The yard is maintenance-free, with the HOA taking care of lawn care so you can relax and enjoy your home. This home is located in Pinehurst Trace, a friendly 55+ community offering great amenities. Residents enjoy a clubhouse, salt water swimming pool, meeting room, tennis courts, pickleball courts, fitness room, lending library, Rec room with large TV & pool table, shuffleboard, year-round social activities and even a on sight hair salon for the community. Take a golf cart ride to the charming Village of Pinehurst for boutique shopping, restaurants, coffee shops, pubs, parks, a library, farmers markets, and community events. The Pinehurst Greenway Trail is only a mile away for running and biking, and FirstHealth Hospital, doctor's offices, and grocery stores are just minutes from your door. Don't wait--this beautiful home won't last long!



all dimensions are to be used for visual purposes only as actuals could differ.

