



59 ST PAULS AVE UNIT 1L

59 SAINT PAULS AVE, JERSEY CITY, NJ 07306

\$399,000

150 Years

JOHN D WOOD & CO.

London, Country & International Property

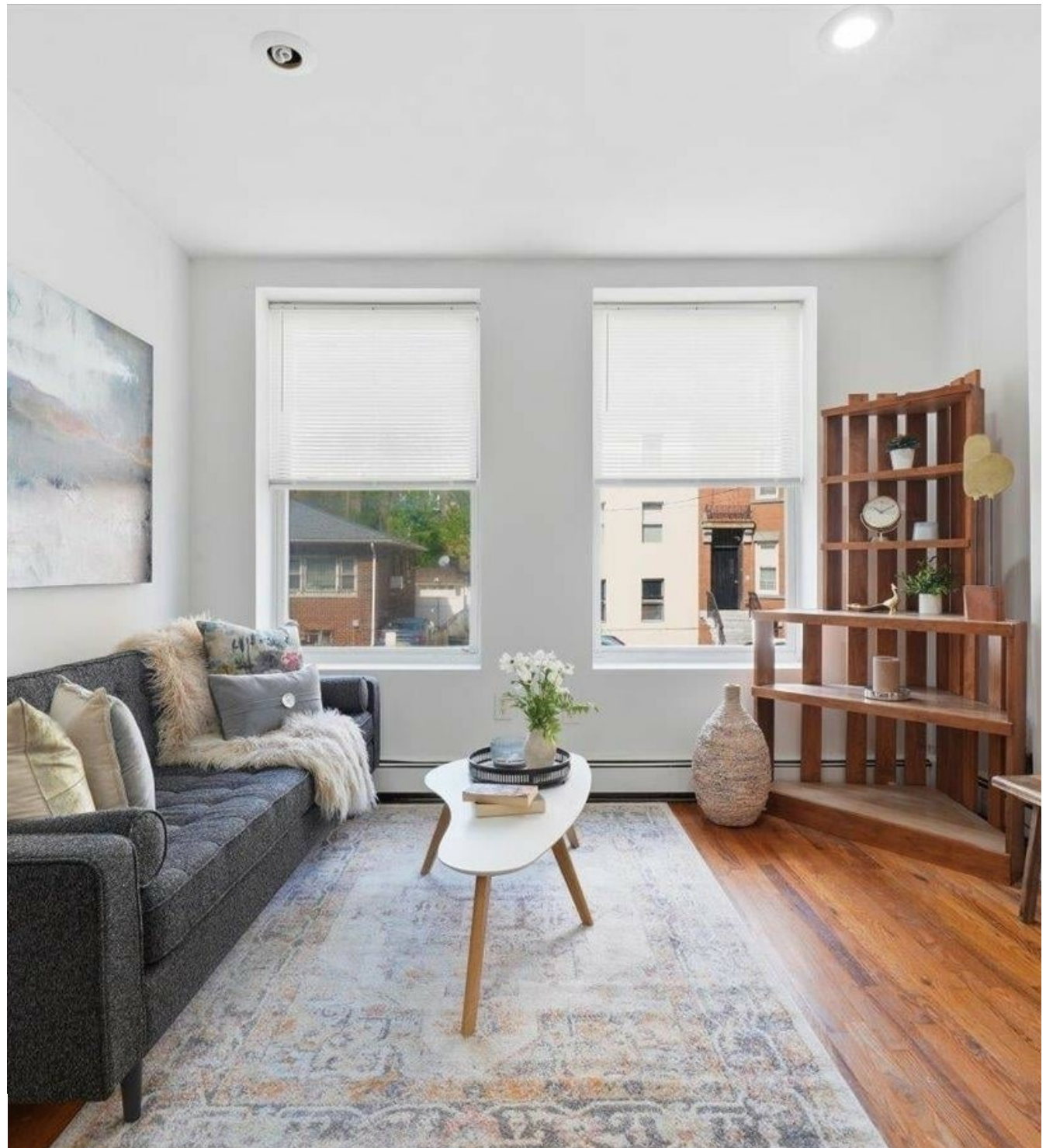
59 ST PAULS AVE UNIT 1L

59 SAINT PAULS AVE, JERSEY CITY, NJ
07306

One of a kind three-bedroom, two full bath duplex condo offers approximately 974 sq ft of comfortable living space in the highly desirable Jersey City Heights neighborhood. All three bedrooms feature large windows that bring in abundant natural sunlight. The upstairs master bedroom includes a renovated full bathroom. Downstairs offers two spacious bedrooms, a second living room, and an additional full bathroom perfect for flexible living arrangements. This is a very well-maintained condo includes an in-unit washer and dryer combo, plus access to a shared backyard. The building is equipped with an app-enabled video entry system and lobby cameras for added safety and security.

Cooling: Window A/C

\$399,000



There are also coin-operated laundry machines available in basement . This is one of the best locations conveniently situated near Route 139 with easy access to the Holland Tunnel and the New Jersey Turnpike, which simplifies and streamlines commuting to NYC Pets are welcome. Don't miss this opportunity whether you're a first-time homebuyer or an investor. Book your viewing today!

