



**1105 SWEETSHRUB COURT**

1105 SWEETSHRUB CT, WILMINGTON, NC 28409

**\$639,999**

*150 Years*

**JOHN D WOOD & CO.**

London, Country & International Property

# 1105 SWEETSHRUB COURT

1105 SWEETSHRUB CT, WILMINGTON, NC 28409

Exceptional quality and meticulous upkeep define this stunning 4-bedroom, 4-bath home located in one of the area's premier communities. Designed with both functionality and elegance in mind, the home features a spacious open-concept layout, beautifully appointed finishes, upgraded fixtures, and sophisticated paint selections throughout. Generously sized bedrooms offer comfort and versatility, while the unfinished bonus room creates a unique opportunity to customize additional living space to fit your lifestyle. Outdoors, the expansive fenced backyard provides the perfect backdrop for entertaining, recreation, or peaceful evenings at home.

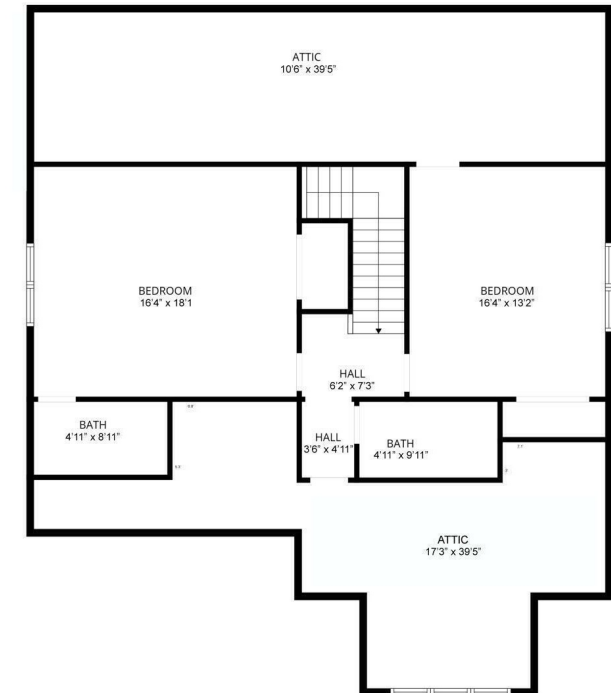
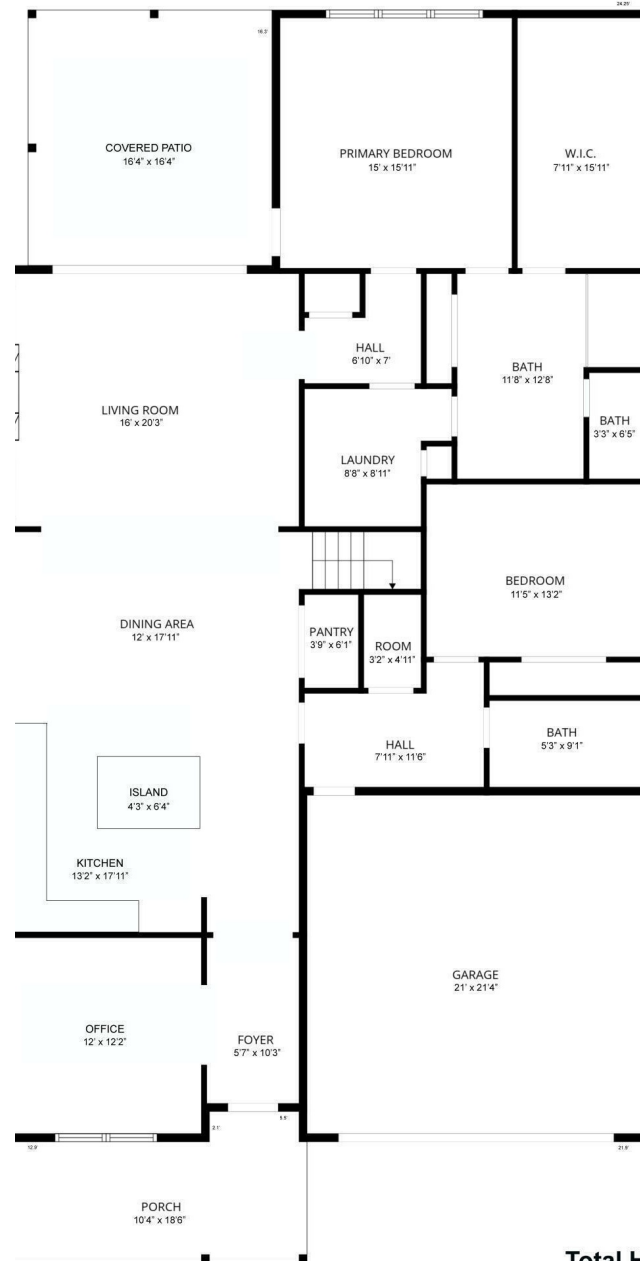
**Basement: None,  
Garage Count: 2 Car Garage,  
Garage Description: Garage**

**\$639,999**



A rare offering that combines like-new condition, thoughtful design, and incredible future potential.

**1105 Sweetshrub Ct  
Wilmington, NC 28409**



**Total Heated: 3025 sq ft.**  
**Floor 1: 2187 sq ft. Floor 2: 838 sq ft.**  
Excluded Areas: Garage: 471 sq ft. Porch: 164 sq ft. Cov Patio: 266 sq ft. Attic 1: 414 sq ft. Attic 2: 332 sq ft.

