

1308 233RD AVENUE SE

1308 233RD AVE SE, SAMMAMISH, WA 98075

\$1,795,000

150 Years

JOHN D WOOD & CO.

London, Country & International Property

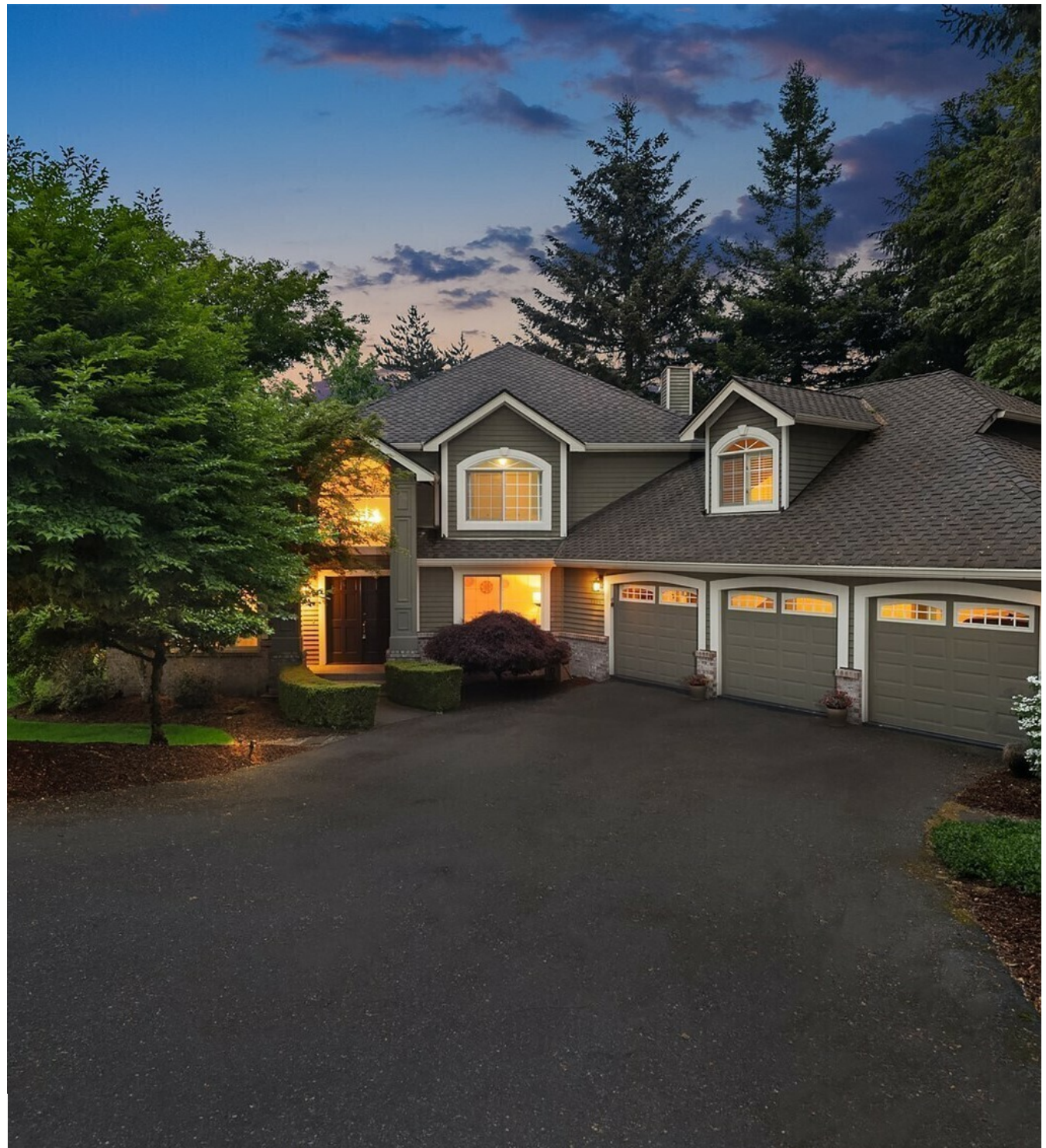
1308 233RD AVENUE SE

1308 233RD AVE SE, SAMMAMISH, WA
98075

Tucked into a quiet pocket of Sammamish's Claremont community, one of the Plateau's sought-after enclaves, this home blends elevated design with exceptional everyday livability. Soaring ceilings create a grand first impression, with a formal living room and private office positioned on either side of the entry. Rich hardwood floors guide you into the heart of the home, where a chef's kitchen outfitted with high-end appliances flows seamlessly into the main living area, ideal for both entertaining, anchored by a sunlit breakfast nook framed in glass with serene treetop views.

Cooling: No A/C,
Fireplace Count: 2 Fireplaces,
Heating Type: Forced Air,
Sewer: Septic,
Water: City Water,
Special Program: Global Luxury

\$1,795,000



The deck extends off the living room, overlooking a private backyard embraced by mature landscaping and offering a peaceful outdoor retreat. A separate staircase leads to a versatile loft, perfect as a media space, playroom, or quiet escape. Upstairs, the spacious primary suite provides a true sanctuary with a spa-inspired five-piece bath, alongside two additional bedrooms. The fully finished lower level offers a fourth bedroom and a flexible bonus room with its own private entry, along with abundant storage ideal for guests, recreation, hobbies, or a work-from-home setup. Enjoy effortless access to all three top-rated schools, with Skyline High just moments from your front door. All of this, minutes from Pine Lake, Sammamish Commons, and daily essentials, with convenient access to Microsoft and downtown Bellevue. A rare offering that combines refined comfort, and an unbeatable Plateau location.



