



2055 FERRY STREET

2055 FERRY ST, WILSON, PA 18042

\$325,000

150 Years

JOHN D WOOD & CO.

London, Country & International Property

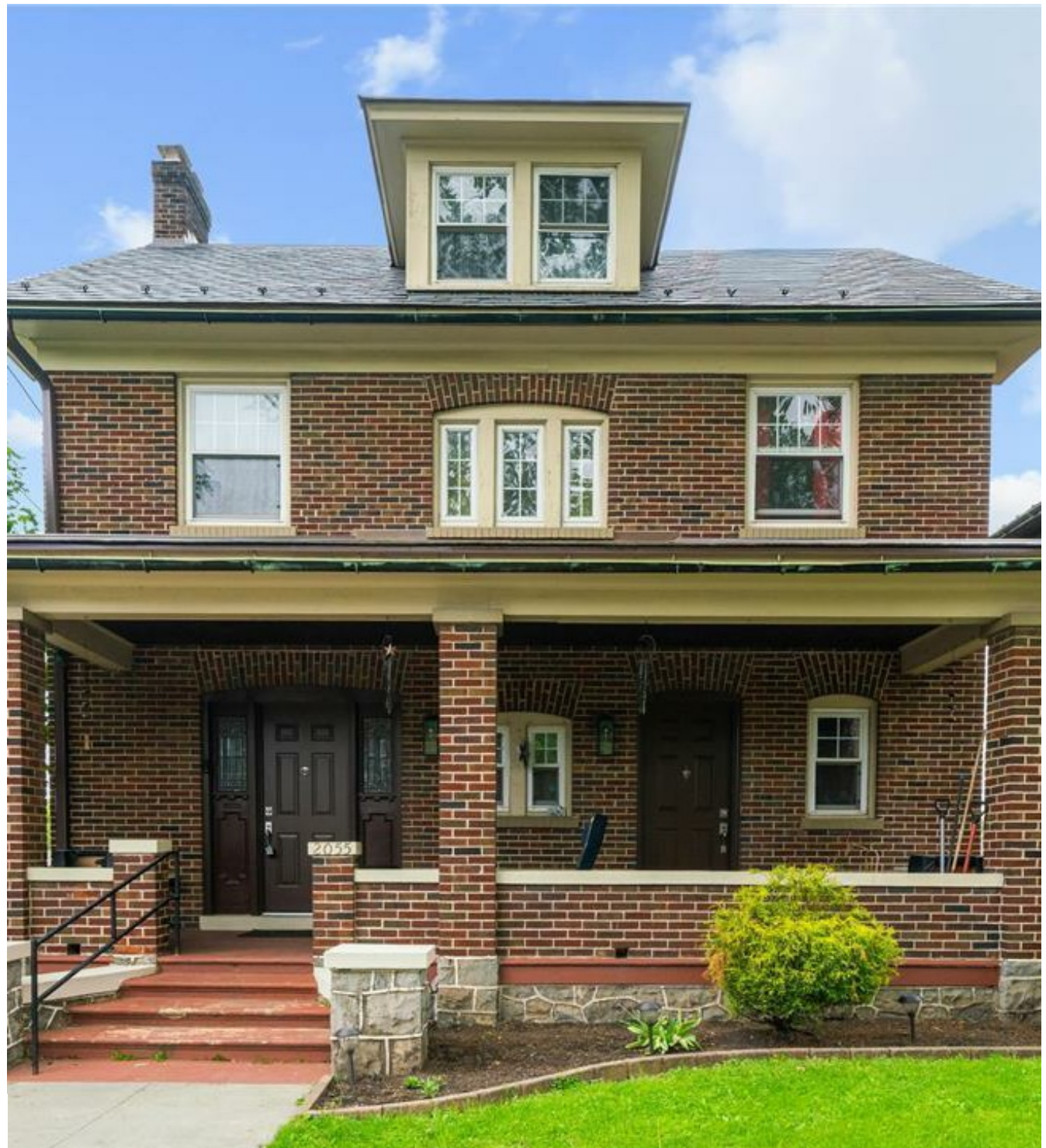
2055 FERRY STREET

2055 FERRY ST, WILSON, PA 18042

Located in the heart of Wilson Borough, this all brick home with over 2,160 square feet of timeless appeal blended with thoughtful updates. From the moment you arrive, the large covered front porch and custom double front doors welcomes you with warmth and curb appeal — the perfect place to relax and enjoy the neighborhood atmosphere. Inside, the home has retained much of its original charm, featuring beautiful hardwood floors, spacious living areas, and classic architectural details throughout.

Appliances: Dishwasher,
Appliances: Refrigerator,
Appliances: Washer,
Basement: Full,
Exterior Description: Brick,
Exterior Living Space: Patio

\$325,000



The first floor boasts a large living room complete with a cozy wood-burning fireplace, an expansive dining room ideal for entertaining, and an updated kitchen featuring granite countertops and stainless steel appliances. The second floor offers three generously sized bedrooms with well-maintained hardwood flooring and a large full bathroom. The third floor continues the home's character with additional hardwood floors and two versatile rooms perfect for bedrooms, office space, a playroom, or guest accommodations. Additional highlights include a 1 car built-in garage, abundant living space. Do not miss your chance on this solid brick home.



