

18520 NE 19TH PLACE

18520 NE 19TH PL, BELLEVUE, WA 98008

\$2,098,000

150 Years

JOHN D WOOD & CO.

London, Country & International Property

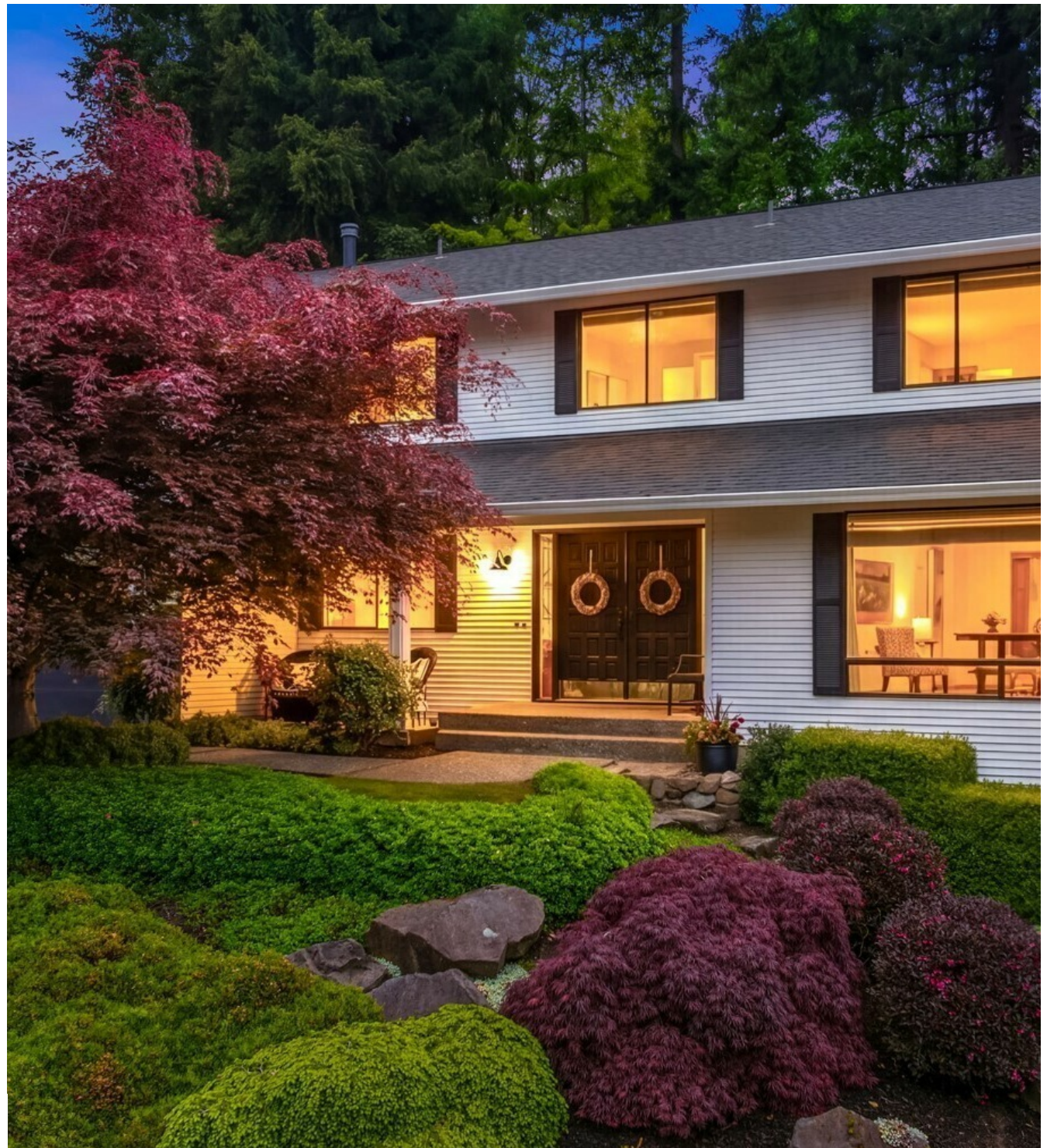
18520 NE 19TH PLACE

18520 NE 19TH PL, BELLEVUE, WA
98008

Tucked into a quiet, walkable street within Bellevue's sought-after Tam O'Shanter Golf & Country Club community, this 4-bedroom, 2.25-bath home offers 3,500 sq ft of comfortable, well-designed living space on a beautiful 9,600 sq ft lot. The living room and primary suite enjoy lovely easterly views of Lake Sammamish and the Cascade Mountains, and the private backyard retreat - lush with mature landscaping - provides a serene escape with a large entertaining deck.

Fireplace Count: 3 Fireplaces,
Cooling: No A/C,
Sewer: Public,
Heating Type: Forced Air,
Water: City Water,
Special Program: Global Luxury

\$2,098,000



This home has been extensively updated over the years - from a new roof, fresh exterior and interior paint, and all-new flooring throughout, to a fully renovated primary bath, refreshed kitchen with new quartz countertops and cabinetry, updated fireplaces, recessed LED lighting in nearly every room, and much more. As a Tam O'Shanter resident, your HOA membership grants private access to the community golf course with unlimited play, tennis and pickleball courts, a swimming pool, and a clubhouse restaurant - exclusively for residents and guests. Surrounded by parks and an outstanding network of trails perfect for an active lifestyle, and ideally situated just minutes from downtown Bellevue and Redmond and served by award-winning Bellevue Schools - a rare chance to own a move-in ready home in one of the Eastside's most distinctive and community-driven neighborhoods.



