



**1001 TERRA BELLA**

IRVINE, CA 92602

**\$828,000**

CRMLS

*150 Years*

**JOHN D WOOD & CO.**

London, Country & International Property

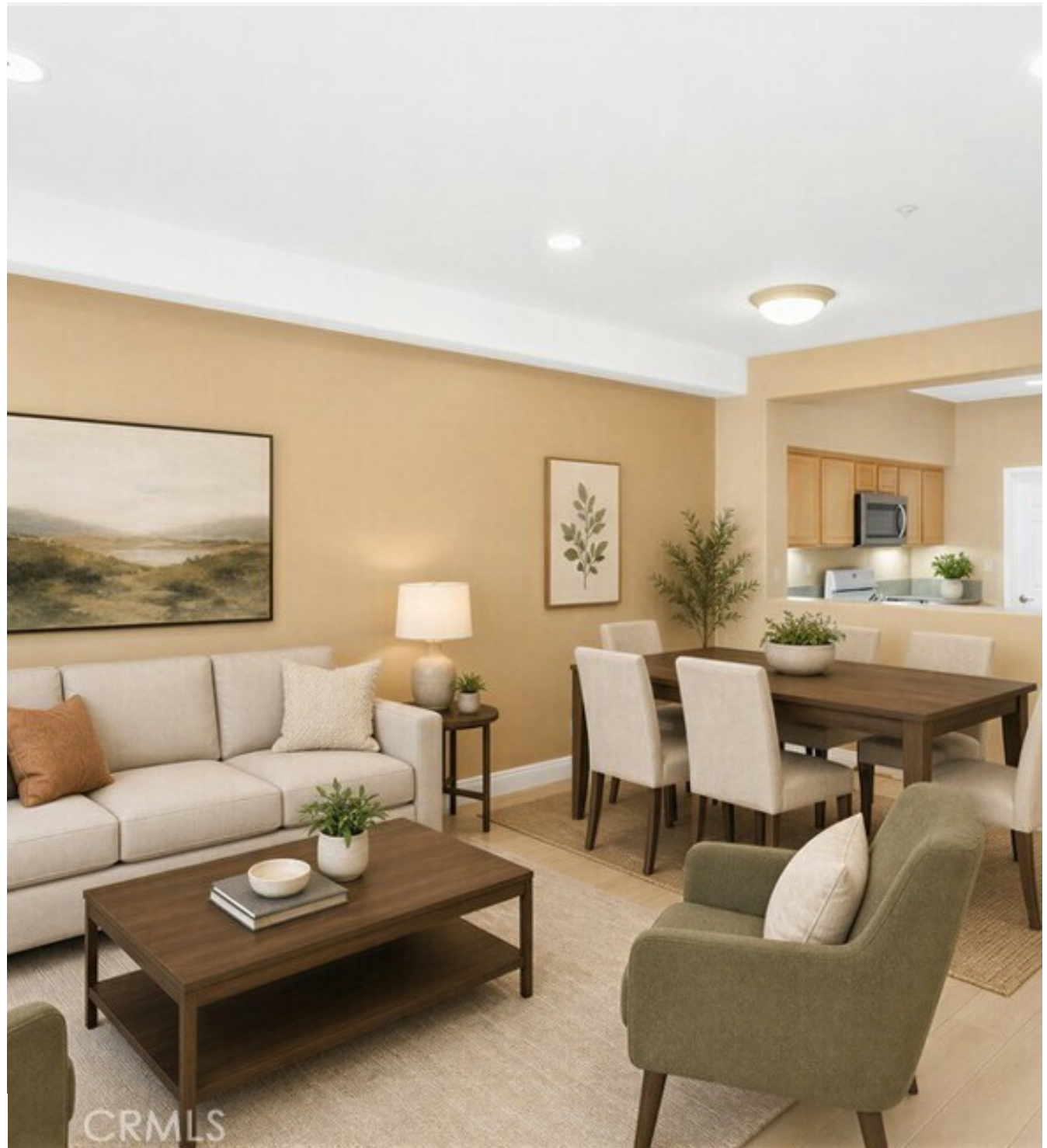
# 1001 TERRA BELLA

IRVINE, CA 92602

\*One level\*Built in 2000 \*2 Bed / 2 Bath  
\* Attached 2-Car Garage \* Guard-Gated Community \* Rarely available single-level, ground-floor residence located in one of Irvine's most desirable 24-hour guard-gated master-planned North Park communities. This thoughtfully designed home offers 2 bedrooms, 2 bathrooms, and approximately 1,100 square feet of open-concept living space. The bright and airy interior features an inviting living room, a charming kitchen with abundant cabinetry, and a spacious dining area ideal for both everyday living and entertaining. An adjacent indoor laundry room provides added convenience and functionality.

**Amenities: Modular Sports Courts,**  
**Amenities: Playground,**  
**Amenities: Tennis Courts,**  
**Area Amenities: Area Pool,**  
**Exterior: BBQ,**  
**Exterior: Sidewalk**

**\$828,000**



The well-proportioned primary suite includes a walk-in closet and a private en-suite bathroom. The secondary bedroom and full hallway bath offer flexibility for guests, a home office, or additional living needs. Upgrades include laminate wood flooring and recessed lighting throughout. A rare highlight for a home of this size is the full-size, side-by-side 2-car garage with direct access—offering privacy, security, and everyday convenience. Enjoy a private front patio overlooking a lush greenbelt, creating a peaceful outdoor retreat with beautiful curb appeal. Residents of Northpark enjoy resort-style amenities including multiple pools, lighted tennis courts, sports courts, playgrounds, clubhouse, parks, and scenic walking trails. Ideally located near award-winning Irvine schools including Arnold O. Beckman High School, as well as The Marketplace, major freeways and toll roads, shopping, dining, golf courses, and hiking/biking trails. A rare opportunity to own a single-level home with a direct-access 2-car garage in one of Irvine's premier communities.



