



**6**

ROMOLA ROAD, LONDON, SE24

**£1,750,000**

*150 Years*

**JOHN D WOOD & CO.**

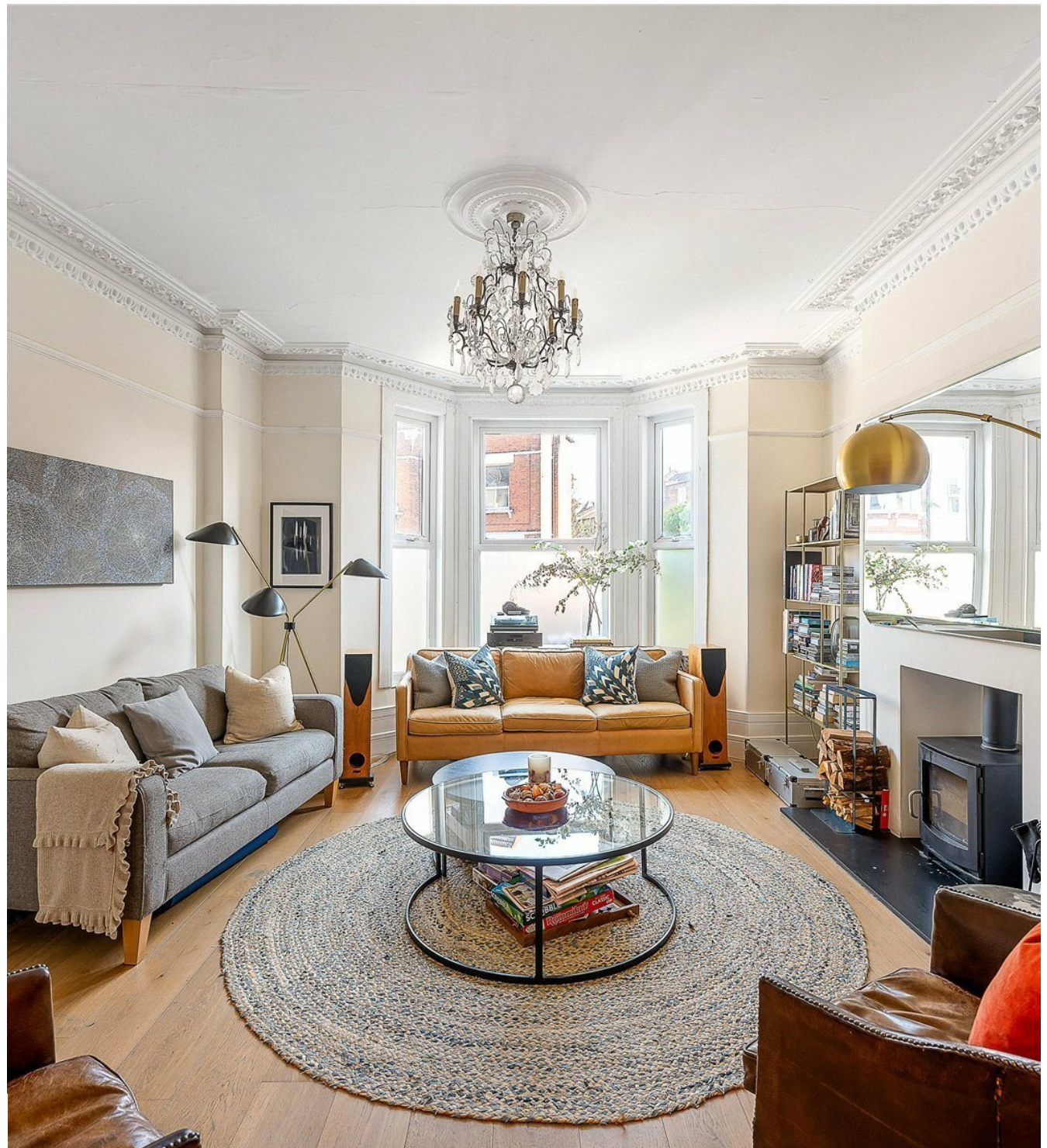
London, Country & International Property

## 6

ROMOLA ROAD, LONDON, SE24

Set on the sought-after residential street of Romola Road and part of the popular Deronda Triangle, is an impressive six-bedroom mid-terraced Victorian home, offering 2,551 sq ft of beautifully refurbished and well-balanced accommodation. Thoughtfully renovated by the current owners, the property effortlessly marries period charm and characterful features with a high-quality contemporary finish. Arranged over three floors, the home features an elegant, large double reception room, complete with intricate ceiling detailing and a wood-burning fireplace, creating a warm and inviting setting.

**£1,750,000**



Along the hallway past the door to a useful cellar and a well-appointed utility room and WC, is an exceptional open-plan kitchen/dining space to the rear. Designed with both style and practicality in mind, this light-filled space blends modern design with traditional touches, forming the true heart of the home. Bi-fold doors open seamlessly onto a well-established, low-maintenance south-west facing garden of unusually large size for this neighbourhood (15m x 10m), an ideal setting for entertaining during the warmer months. The first floor features a unique landing library, providing a striking focal point and a wonderful sense of character. This level also comprises the principal bedroom, a further double bedroom with ensuite, plus an additional bedroom to the rear currently used as a home office, alongside a stylish, panelled family bathroom. The top floor offers excellent versatility, with three further bedrooms and an additional bathroom, ideal for growing families or flexible living arrangements.



Perfectly positioned for family life, the property is within easy reach of the vast open spaces of Brockwell Park, renowned for its lido, café, and far-reaching views across the city, as well as the nearby Herne Hill, a vibrant and well-loved area known for its village feel, independent cafés, Sunday market, and strong sense of community. Additional green spaces including Dulwich Park and Peckham Rye Park Dulwich Woods are also within easy reach, offering a wealth of outdoor and recreational opportunities. The area is particularly popular with families, thanks to its selection of well-regarded schools and welcoming community atmosphere. Substantial family home extending to approximately 2,551 sq ft, Generous 48ft south-west facing private garden, Excellent transport links with direct access to London Bridge and St Pancras International, Moments from Brockwell Park including the renowned Brockwell Lido and Glassmaker's Café, Situated in the heart of the serene Deronda Triangle a highly sought-after residential enclave Reference JHH250257



