



1432 EL PASO DR

GLASELL PARK, CA 90065

\$1,495,000

150 Years

JOHN D WOOD & CO.

London, Country & International Property



1432 EL PASO DR

GLASSELL PARK, CA 90065

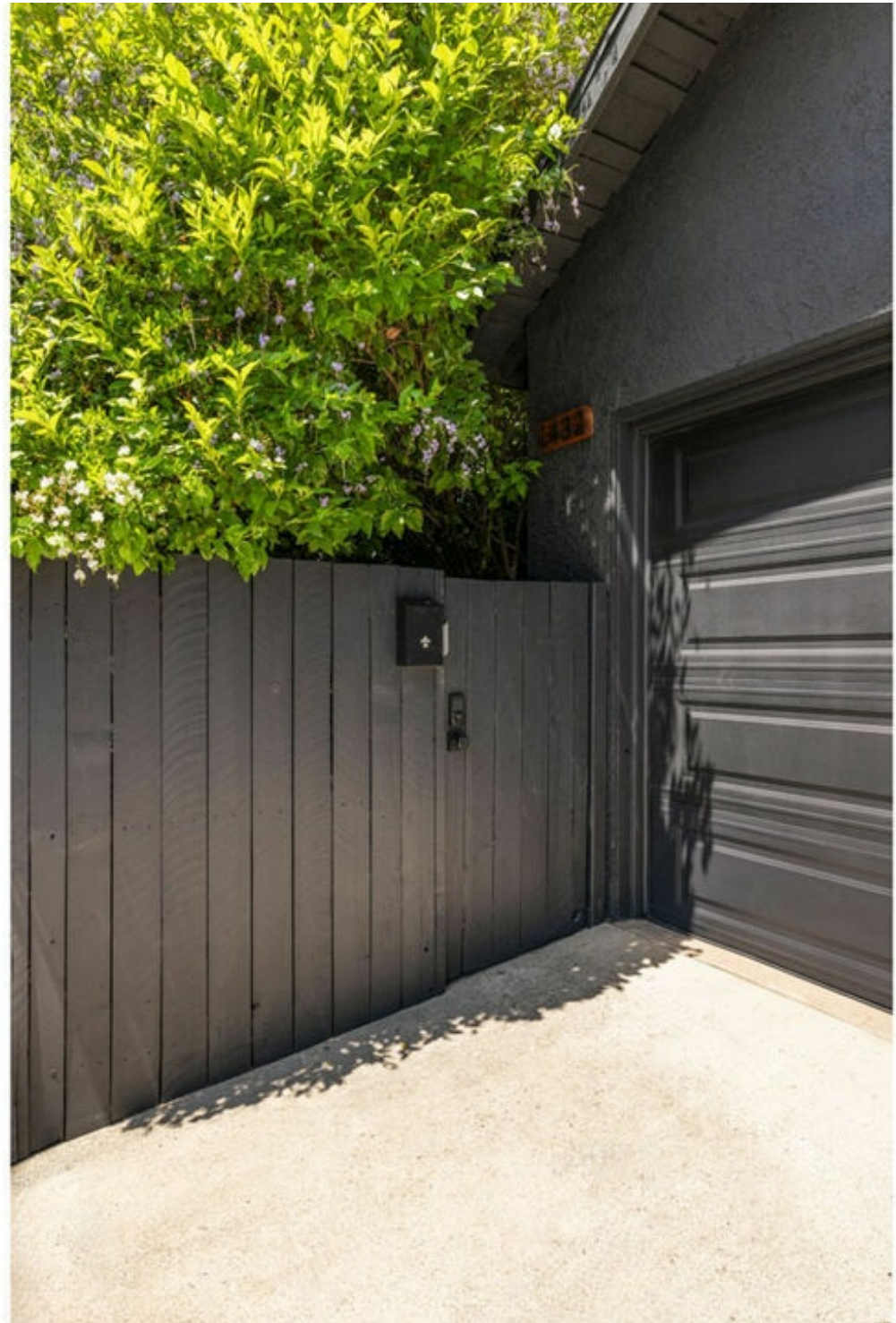
Sequestered behind lush greenery in Eagle Rock, this artfully updated Traditional is your glamorous haven in a hip location, delivering four bedrooms, breathtaking views, and a backyard oasis. A diamond-patterned entry court sets the tone as you arrive at the front door. The sun-splashed layout impresses with arched passthrough details and statement lighting in the dedicated living area; the generous dining area overlooks stunning views of mountains and city lights. The modern kitchen is beautifully appointed with marble surfaces, designer fixtures and stainless appliances.

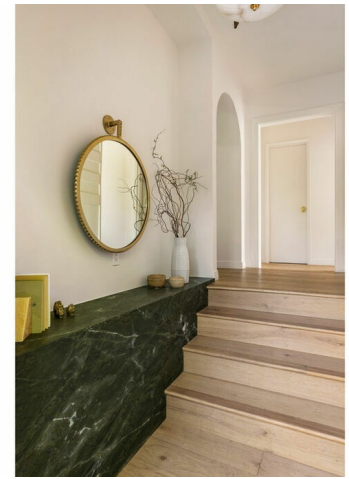
**Heating Type: No Heat,
Cooling: Central A/C,
Special Program: Global Luxury**

\$1,495,000



Four spacious bedrooms enjoy great light; the bathrooms are pure glamour, finished with gorgeous marble and feeling like a boutique hotel. The private yard is a serene California idyll with a shaded pergola, jacuzzi, potted plantings, and scenic vistas stretching into the distance. Amenities include central HVAC and Nest thermostat. Well-situated within the boundary of several coveted Eagle Rock schools, you're close to Chifa, Capri Club, The Dunsmoor, and all the best of NELA.





THE
MLS



THE
MLS



THE
MLS