

5942 21ST AVENUE SW

5942 21ST AVE SW, SEATTLE, WA 98106

\$1,249,000

150 Years

JOHN D WOOD & CO.

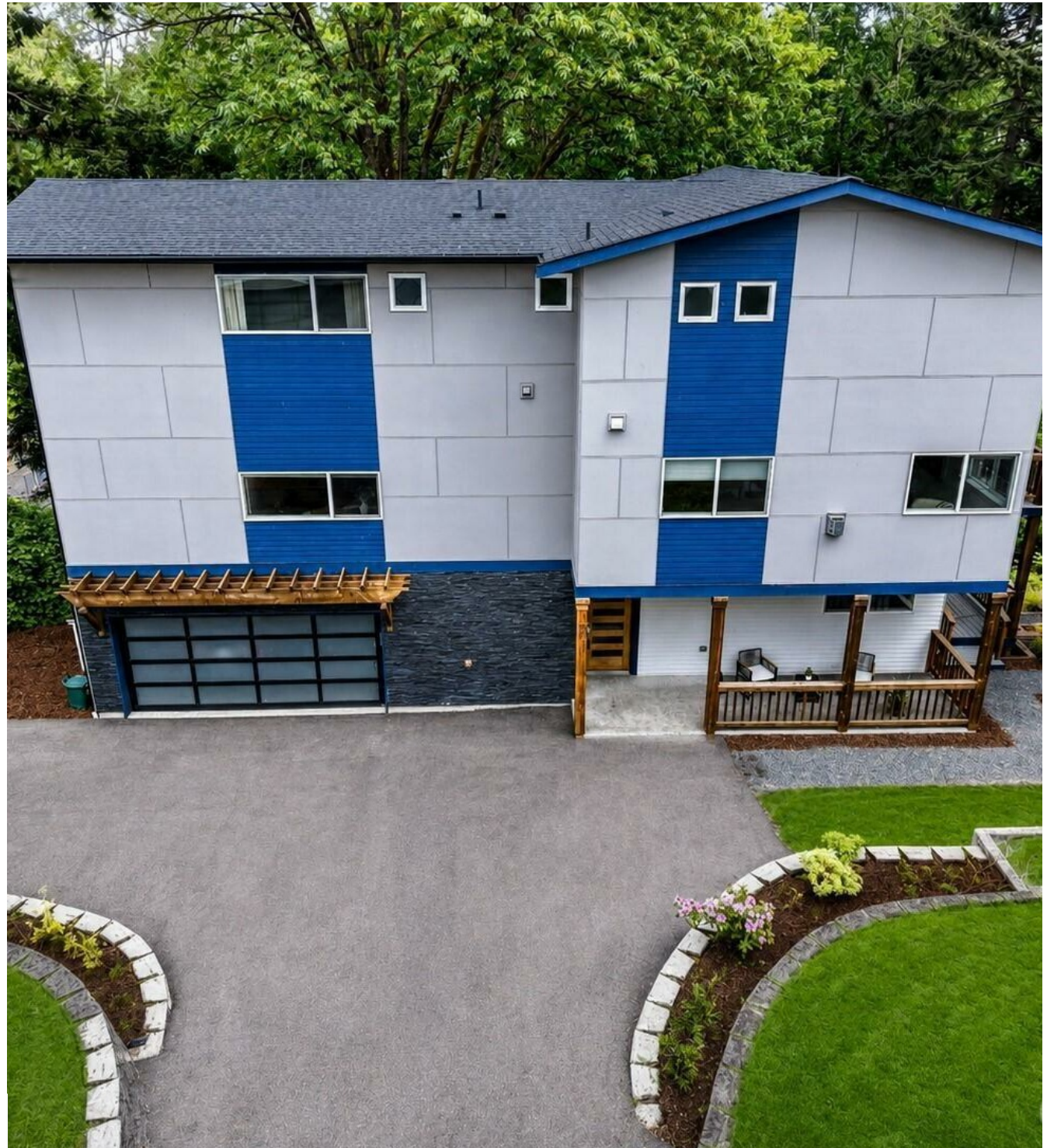
London, Country & International Property

5942 21ST AVENUE SW

5942 21ST AVE SW, SEATTLE, WA
98106

Modern 4-bedroom home tucked among the trees on rare 26,300 sqft+ lot in West Seattle. Built in 2018, this 3,100 sqft home features engineered hardwood, stainless steel appliances, quartz countertops & an open-concept main level. Expansive living, dining, & kitchen spaces, walk-in pantry, & 2 decks for indoor-outdoor living. Lower level offers a flexible guest suite w/wet bar, full bath, walk-in closet, & its own private deck ideal for visitors or multi-gen living. Upstairs includes 3 bedrooms, large laundry room, & Bright open space that is perfect for a home office or homework desk.

\$1,249,000



Spacious primary retreat w/Two walk-in closets (+ hidden bonus closet) & stunning high end bath w/dual Vanities, high quality tile, luxury shower & free standing tub. Wake up surrounded by treetops & Natural beauty, while only minutes away from Alki Beach, WS Junction & Downtown Seattle. Endless Opportunities to Explore. Dedicated space for Gardening & Entertaining, w/Large Inviting front porch. Relax with friends by the firepit or in a hammock under the trees. It will feel like you're at a retreat in the middle of the woods, but this gem is hidden right in the center of one of Seattle's most vibrant neighborhoods! Commuters dream! Home comes wired for generator with 220v power in the garage for future EV. Schools, Several Parks & Community Garden are easily walkable! Gated neighborhood park with music theme just steps away. Large 2 car garage + additional parking! Welcome Home! See Virtual Tour



