

2 EVENING BREEZE

IRVINE, CA 92603

\$1,095,000

150 Years

JOHN D WOOD & CO.

London, Country & International Property

2 EVENING BREEZE

IRVINE, CA 92603

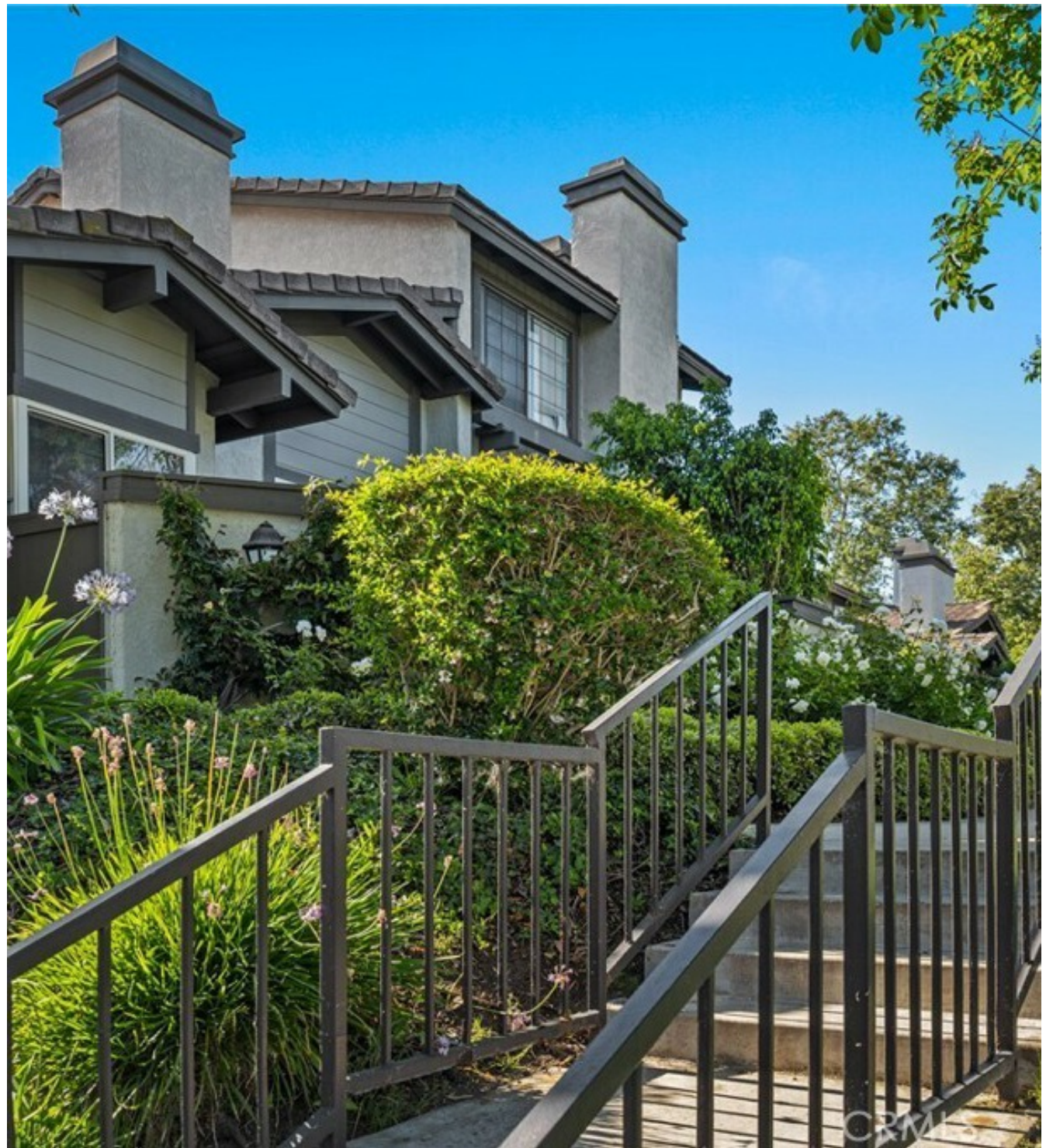
Turn-Key Luxury in Highly Coveted Turtle Rock. Perfectly positioned in one of the community's most desirable locations, this beautifully remodeled end-unit sits on a raised corner lot surrounded by lush greenbelts and mature greenery, offering an exceptional sense of privacy, tranquility, and natural beauty. Nestled on a picturesque, tree-lined street just steps from the exclusive Shady Canyon enclave, this completely reimagined 2-bedroom, 2-bathroom home presents a rare, move-in-ready ownership opportunity paired with an exceptional Orange County lifestyle. Step inside to discover a bright, expansive open floor plan accentuated by soaring ceilings and an abundance of natural light.

**Garage Count: 2 Car Garage,
Sewer: Public,
Cooling: Central A/C,
Water: City Water**

\$1,095,000



The seamlessly connected living and dining areas are anchored by a sleek, modernized corner fireplace, creating an inviting space for both entertaining and everyday living. Towering sliding glass doors with upgraded dual-pane windows lead to a private, low-maintenance patio complete with charming planter beds-perfect for morning coffee, outdoor dining, or quiet evening relaxation surrounded by mature greenery. The pristine kitchen features brand-new stainless steel appliances, gorgeous updated cabinetry, and a fresh contemporary feel designed for modern living. Fresh paint and stunning new flooring flow effortlessly throughout the entire residence. Upstairs, the tranquil primary suite serves as a true retreat, boasting impressive high ceilings, dual large closets, and a beautifully updated en-suite bathroom with a spacious walk-in shower. The generous second bedroom and adjacent guest bathroom have also been thoughtfully modernized to match the home's elevated design aesthetic. Beyond the home itself, residents enjoy the unmatched lifestyle that makes Turtle Rock one of Irvine's most sought-after neighborhoods. Known for its mature trees, rolling greenbelts, scenic walking trails, and peaceful residential atmosphere, Turtle Rock offers a rare blend of natural beauty and central convenience.



Located near top-rated Irvine schools, University of California, Irvine, world-class shopping and dining, hiking and biking trails, beaches, and major employment centers, this location is ideal for professionals, families, downsizers, and investors alike. Don't miss this opportunity to own an immaculate, fully upgraded home in one of Orange County's premier communities.



