

312 CORRILLO DRIVE

312 CORRILLO DR, SAN RAFAEL, CA 94903

\$1,729,000

150 Years

JOHN D WOOD & CO.

London, Country & International Property

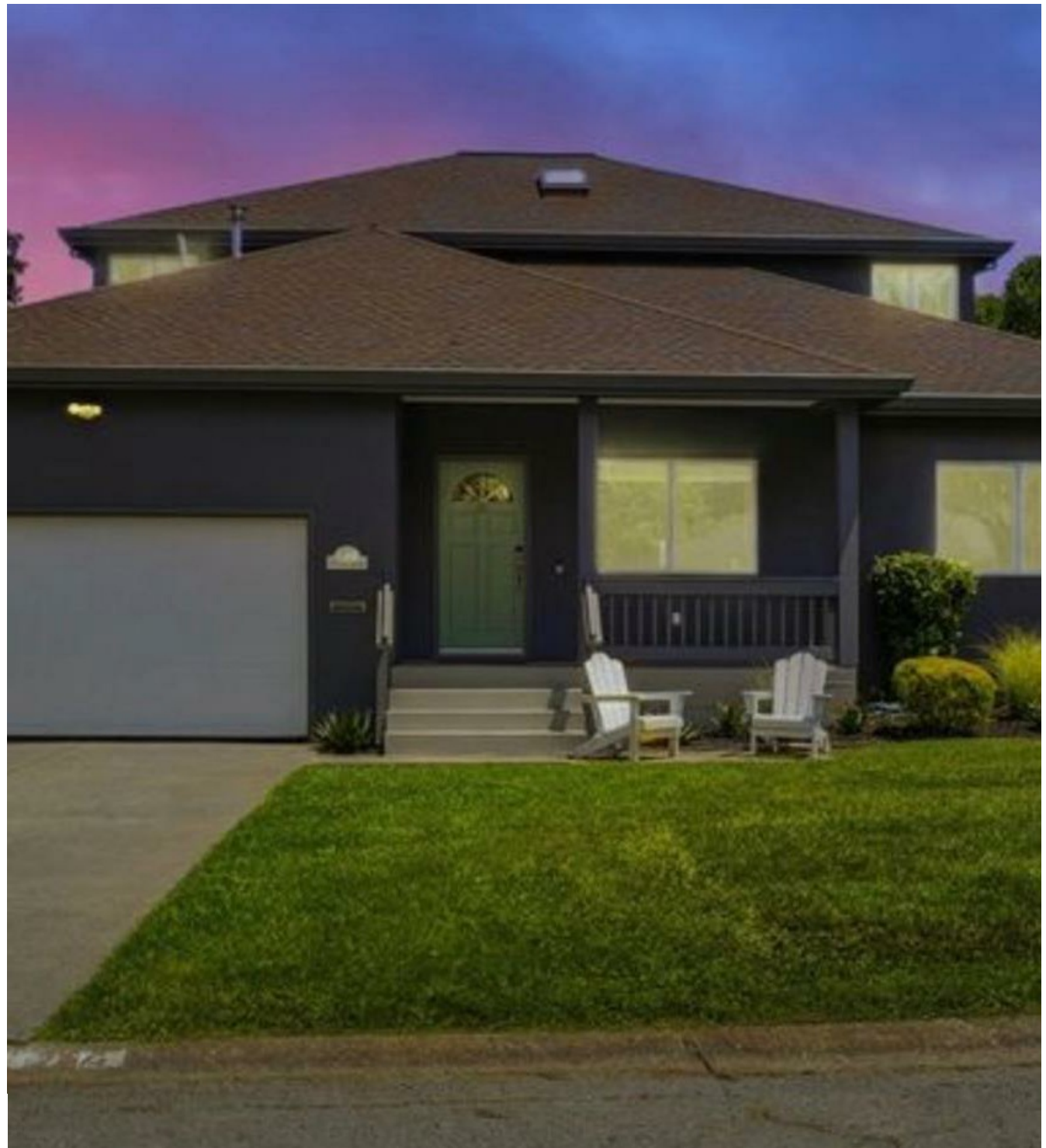
312 CORRILLO DRIVE

312 CORRILLO DR, SAN RAFAEL, CA
94903

Welcome to 312 Corrillo Drive, a beautifully updated 6-bedroom, 3-bath home offering 3,144 square feet of flexible living space in a highly convenient San Rafael location. Designed for both everyday comfort and effortless entertaining, this residence features a generous open-plan main level, remodeled interiors, bespoke tile walls, air conditioning, a spacious 2-car garage, and an inviting outdoor retreat. The heart of the home is the expansive main living area, where the kitchen, dining, and living spaces flow together seamlessly. The custom designed kitchen offers a fresh, modern feel with ample space for gathering, cooking, and hosting.

Garage Count: 2 Car Garage,
Sewer: Public,
Fireplace Count: 1 Fireplace,
Cooling: Central A/C,
Water: City Water

\$1,729,000



Updated bathrooms add comfort and style throughout, while the home's six bedrooms provide exceptional flexibility for family, guests, work-from-home needs, or multigenerational living. Step outside to a beautifully designed, flat turf yard ideal for play, relaxation, and low-maintenance outdoor enjoyment. A private hot tub creates the perfect place to unwind at the end of the day, while the level yard offers easy indoor-outdoor living for weekend barbecues, entertaining, or quiet evenings at home. A spacious 2-car garage adds excellent everyday convenience, offering room for parking, storage, bikes, gear, or a home workshop setup. Set in a wonderful, well established, family-friendly neighborhood known for its block parties and festive holiday celebrations, the home offers both a true sense of community and outstanding convenience. Enjoy quick access to Highway 101, nearby schools, shopping, dining, parks, and everyday amenities. With freeway access just minutes away, commuting throughout Marin, San Francisco, and the greater Bay Area is effortless.

