

7

WOODWARDE ROAD, LONDON, SE22

£2,500,000

150 Years

JOHN D WOOD & CO.

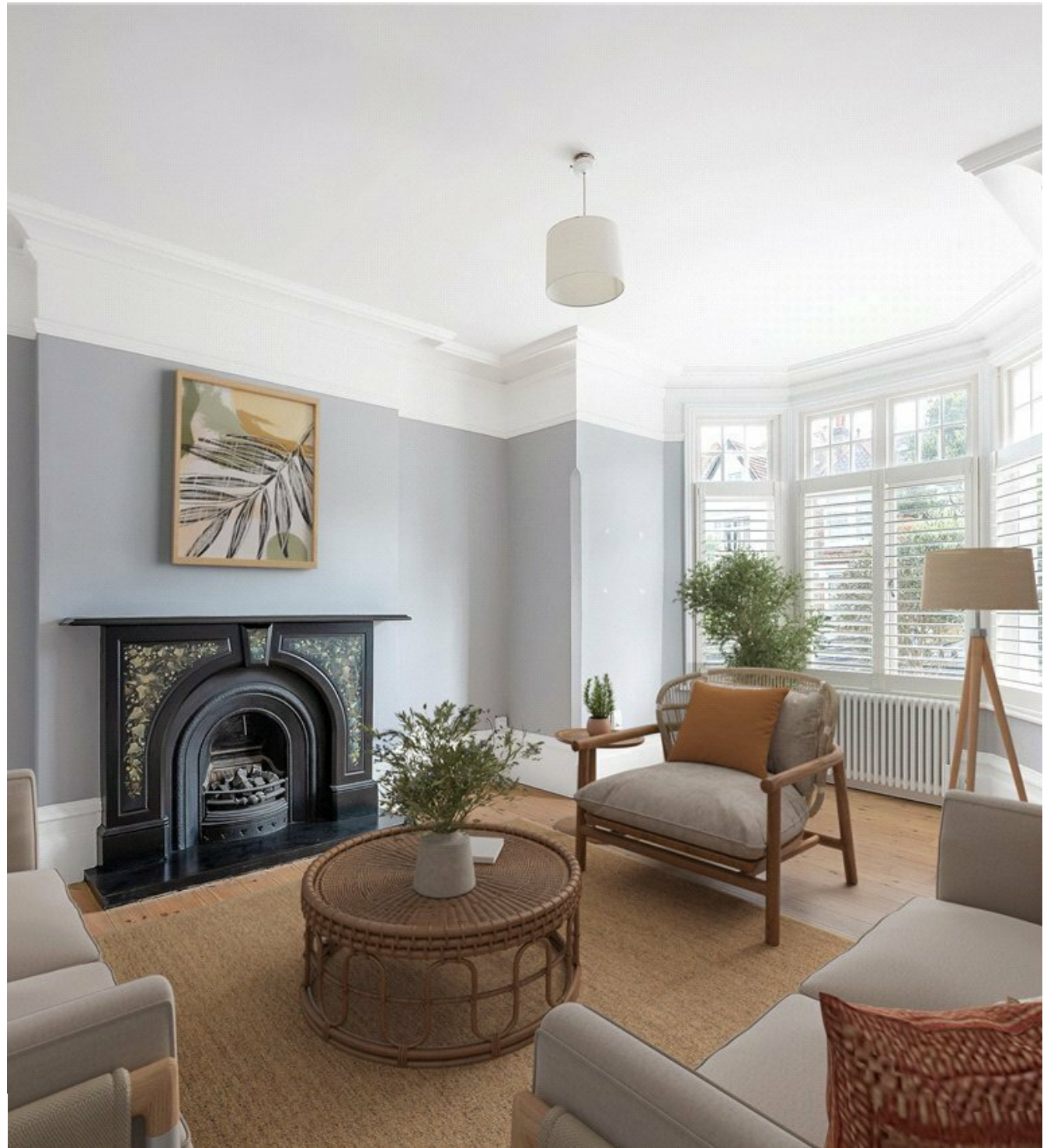
London, Country & International Property

7

WOODWARDE ROAD, LONDON, SE22

Having undergone extensive refurbishments in 2013, this elegant semi-detached home offers a substantial 3196 sqft of beautifully designed accommodation perfectly suited to both everyday living and entertaining. At the heart of the house is a striking open-plan kitchen and dining space, complete with a central island and full-width bifold doors that open seamlessly onto the attractive south-west facing garden. The ground floor also features two generous reception rooms, including a wonderfully bright front reception enhanced by a large bay window. The lower ground floor has been cleverly configured to provide a substantial additional living area, perfect for use as a relaxed family room.

£2,500,000



With its accompanying en suite, this flexible space could equally function as a guest suite or occasional bedroom. A separate utility room is also located on this level. The bedroom accommodation is arranged across the upper floors. On the first floor are three spacious bedrooms and a contemporary family bathroom featuring both a walk-in shower and freestanding bath. The top floor provides two further bedrooms, a study, an additional shower room, extensive storage and loft access. Woodward Road remains one of Dulwich's premier residential addresses, moments from the character and amenities of Dulwich Village, the open expanses of Dulwich Park and the popular independent shops, cafés and restaurants along Lordship Lane. Excellent transport connections are available from nearby North Dulwich, East Dulwich, Denmark Hill, Herne Hill, Peckham Rye and Forest Hill stations, offering straightforward access into the City, Canary Wharf, the West End and central London. Numerous bus routes also serve the area.



The property is particularly well placed for an exceptional choice of highly regarded schools, both state and independent, including The Charter School North Dulwich, Dulwich Village Infants' School, Dulwich Hamlet Junior School, James Allen's Girls' School, Alleyn's School, Dulwich Prep & Senior and Dulwich College. Reference JHH260123

