

6022 29TH AVENUE SW

6022 29TH AVE SW, SEATTLE, WA 98126

\$875,000

150 Years

JOHN D WOOD & CO.

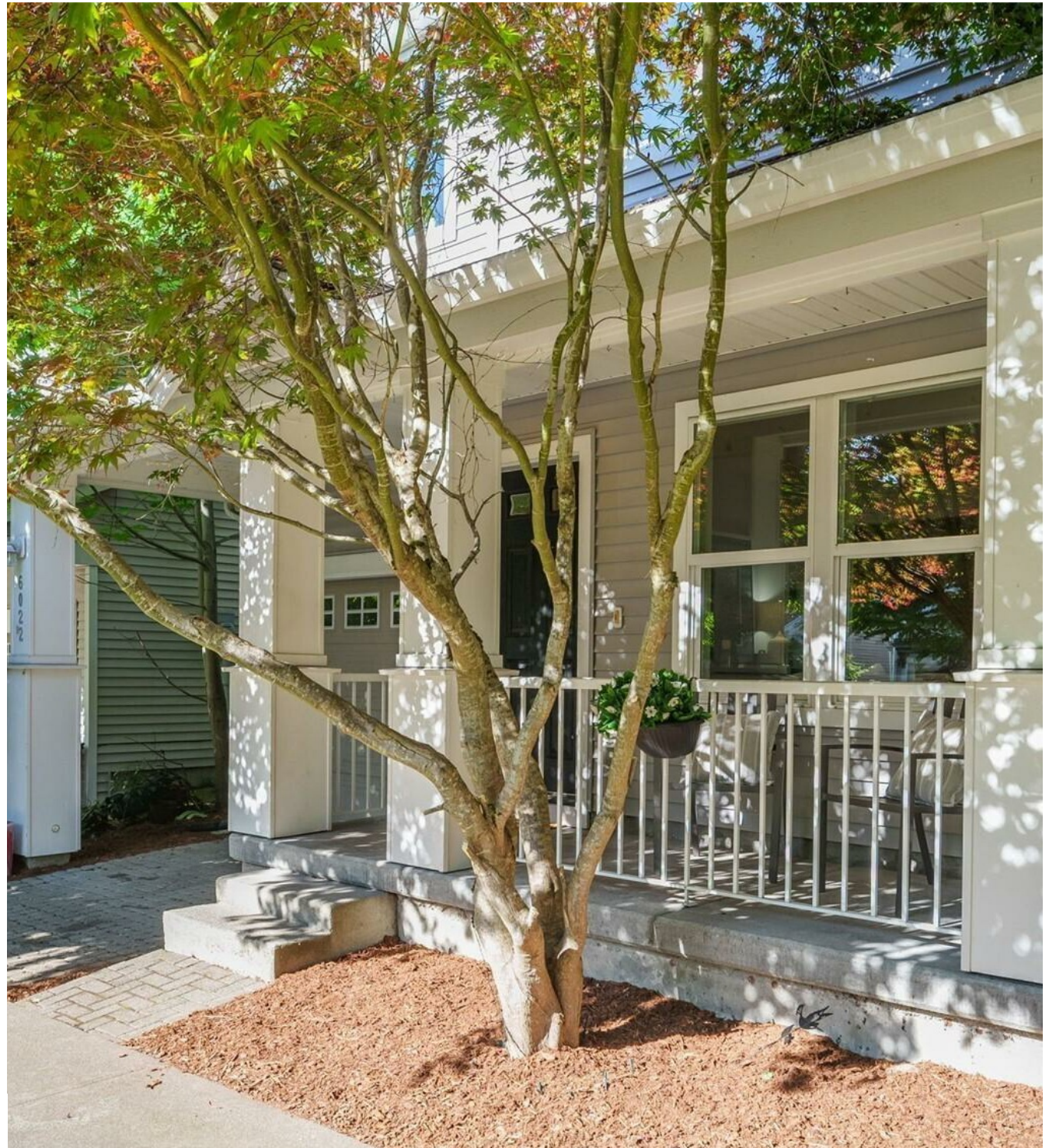
London, Country & International Property

6022 29TH AVENUE SW

6022 29TH AVE SW, SEATTLE, WA
98126

Tucked into a peaceful, tree-lined West Seattle setting, this beautifully designed home offers an ideal blend of comfort, functionality, and flexible living on a quiet residential street just minutes from parks, beaches, shops, and dining that define the West Seattle lifestyle. Open-concept layout with a spacious living room, dining area, office nook, and an impressive kitchen that truly serves as the heart of the home. A huge center island, stainless steel appliances, extensive cabinetry, and seamless flow into the living spaces make the kitchen highly functional and ideal for everyday living and entertaining.

\$875,000



Large windows bring in abundant natural light and create a warm & inviting atmosphere throughout. Upstairs, three bedrooms and two bathrooms are conveniently located on the same level, including a spacious primary suite with a walk-in closet and en-suite bath. The lower level adds versatility with a large bonus / second living room ideal for a media room, gym, playroom, guest space, or home office, plus a dedicated laundry room and tandem two-car garage with additional storage. Step outside to a private backyard retreat surrounded by mature greenery, offering space to relax, entertain, or unwind outdoors. Located just minutes from the Junctions, parks, beaches, restaurants, coffee shops, and everyday amenities, the home combines peaceful residential living with easy access to all the energy and lifestyle that make West Seattle so special.



