

**2302 BARN SWALLOW DR**

LONGMONT, CO 80504

**\$887,000**

*150 Years*

JOHN D WOOD & CO.

London, Country & International Property

## 2302 BARN SWALLOW DR

LONGMONT, CO 80504

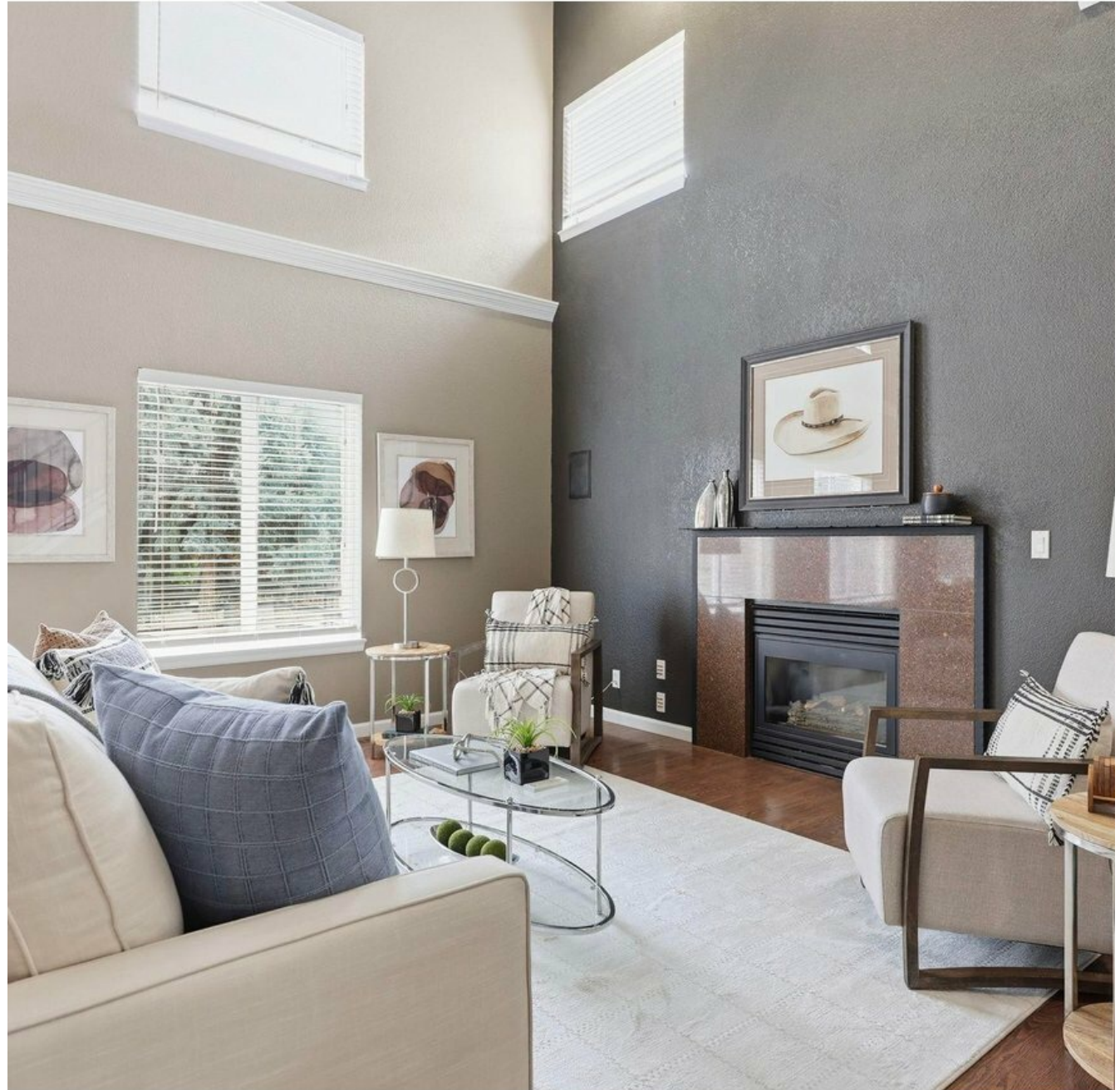
The Creekside Haven. Tucked within the desirable Creekside in Longmont community, this light-filled residence blends timeless architecture with modern comfort in a location that connects seamlessly to bike trails, everyday conveniences, and Colorado's outdoor lifestyle. A dramatic great room with soaring two-story ceilings invites an abundance of natural light, while rich wood floors and a gas fireplace create a warm, sophisticated gathering space designed for both relaxed living and effortless entertaining. French doors introduce a private home office, offering an ideal setting for focused work or creative pursuits.

**Sewer: Public,**  
**Garage Count: 3 Car Garage,**  
**Cooling: Central A/C,**  
**Heating Type: Forced Air,**  
**Water: City Water,**  
**Special Program: Global Luxury**

**\$887,000**



The kitchen is both refined and highly functional, centered around an expansive prep island and complemented by newer appliances and a sunlit breakfast nook. Ascending the staircase with elegant wrought iron railing, a versatile loft overlooks the great room below-perfect as a media lounge, game space, or convert to a 4th bedroom. The primary suite is a true retreat, appointed with a luxurious five-piece bath including a jetted tub, dual-head shower, and dual closets, enhanced with custom organizational systems. Throughout the home, custom closet finishes elevate both form and function, while new LED lighting provides a fresh, contemporary ambiance. Two additional bedrooms offer generous proportions and natural light, complemented by a shared bath featuring a skylight that brightens the space. The unfinished basement offers exceptional flexibility, with abundant storage, a workshop area, and rough-in plumbing ready for future expansion. Designed with lifestyle in mind, the spacious backyard provides room to gather, play, and entertain, while the three-car garage offers substantial storage capacity. Dedicated camper parking adds rare versatility for those seeking adventure.



A rare balance of scale, light, and livability, this residence offers an elevated experience within one of Longmont's most convenient settings.

