



APARTMENT 2602, 155

WANDSWORTH ROAD, LONDON, SW8

£600,000

150 Years
JOHN D WOOD & CO.

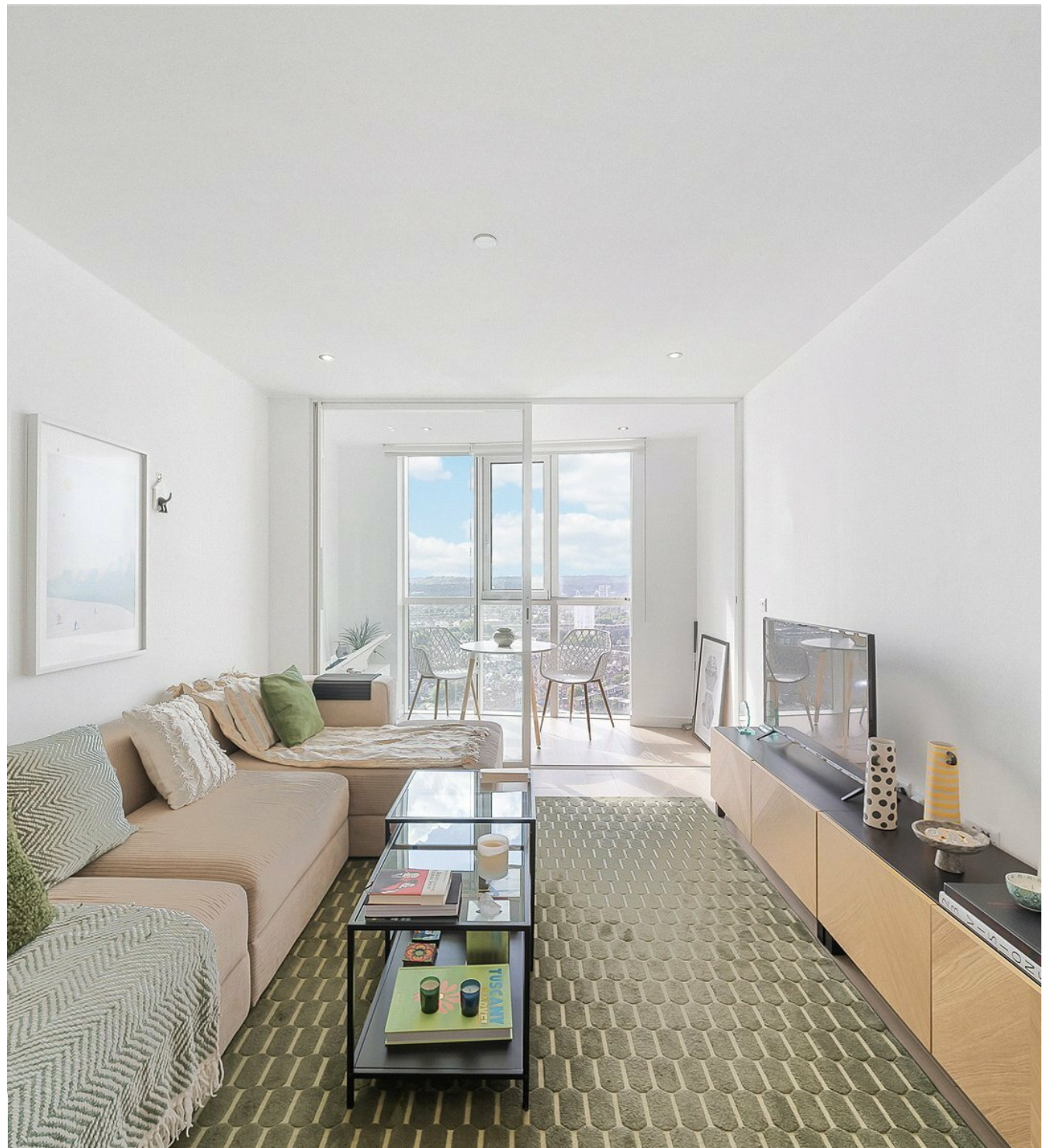
London, Country & International Property

APARTMENT 2602, 155

WANDSWORTH ROAD, LONDON, SW8

An immaculately presented 26th floor one bedroom apartment in the eye-catching modern Sky Gardens development, located within 50 metres of Nine Elms tube station and a short walk of Vauxhall underground, train and bus station. The well-balanced accommodation of 542 Sq Ft is flooded with natural light, offering breath-taking views across London and features ultra-modern fittings including air-conditioning. An open-plan reception space has a stylish kitchen area, ample space to dine and relax and leads onto the generous winter gardens with fantastic views. The bedroom benefits from fitted storage, there is a modern bathroom suite and further storage in the hallway.

£600,000



Residents of the exclusive Sky Gardens have a 24-hour concierge service, access to a gymnasium and the stunning 35th floor communal roof terrace with panoramic views across the city. Reference CPH260056

