



**FLAT 10, ROYAL BELGRAVE
HOUSE**

HUGH STREET, PIMLICO, LONDON, SW1V

£750,000

150 Years
JOHN D WOOD & CO.

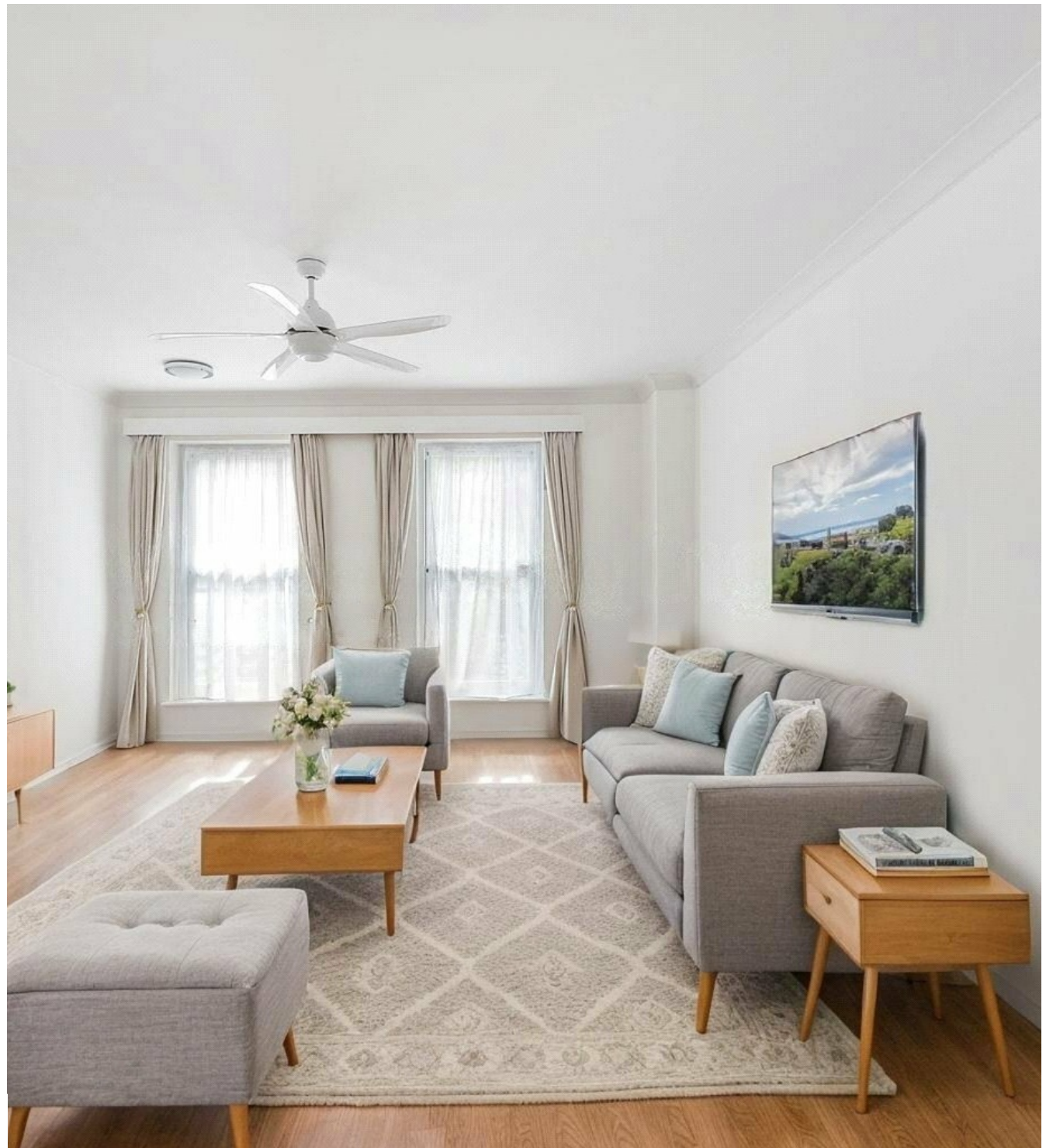
London, Country & International Property

FLAT 10, ROYAL BELGRAVE HOUSE

HUGH STREET, PIMLICO, LONDON,
SW1V

A recently refurbished two bedroom, two bathroom flat of approximately 800 sq ft, located on the first floor of a well maintained purpose built block on Hugh Street, moments from Victoria Station and the amenities of Pimlico. The entrance hall leads to a separate kitchen and two large storage cupboards, while the main corridor opens into a spacious, south east facing reception room with large windows and excellent natural light. Both bedrooms are generous doubles with built-in storage, and the principal bedroom features an en suite, with a second bathroom located just off the hallway. The flat benefits from designated underground parking, and concierge.

£750,000



A practical and well-appointed home in
a superbly connected location.
Reference BEL250050



