



**3840 DENNISON AVENUE**

3840 DENNISON AVE, DREXEL HILL, PA 19026

**\$235,000**

*150 Years*

**JOHN D WOOD & CO.**

London, Country & International Property

## 3840 DENNISON AVENUE

3840 DENNISON AVE, DREXEL HILL, PA  
19026

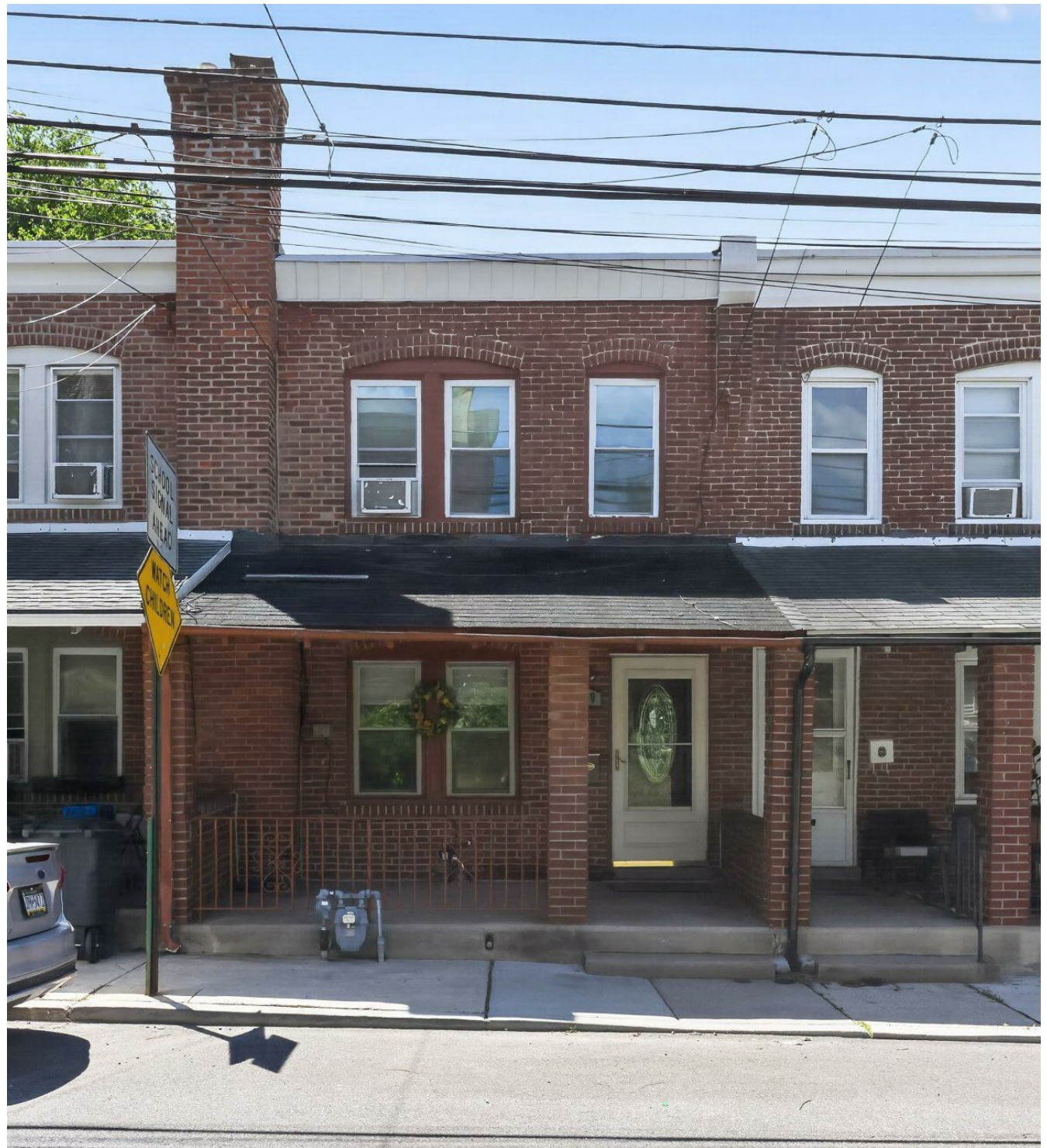
Welcome to 3840 Dennison Ave., a well maintained 3 bedrooms, 2 full bath home with a finished basement that backs up to the mature trees of Kent Park. You're greeted by the covered front porch with newer door- great spot to relax and connect with neighbors. The living room has a gas fireplace and leads effortlessly into the dining space. Continue on to the flexible space that can be used as an additional kitchen area, coffee/sitting room, or even an office, and then to the kitchen with updated appliances and access through a sliding glass door to the back deck. Do not miss the back of the home!

**Sewer: Public,**  
**Heating - Fuel Type: Oil,**  
**Heating Type: Forced Air,**  
**Water: City Water**

**\$235,000**



The second story back deck overlooks a well-maintained yard, and just past the property line are the wooded views of Kent Park. The owners have recently updated the planks on the deck and added string light for the perfect ambiance. Whether it's coffee in the morning, relaxing with friends, or just a break from the chaos of everyday life, this back deck and views are a rare bonus to this spacious home. Upstairs you'll find three bedrooms and a full bathroom. The primary bedroom was extended by the previous owners and offers tons of space. Downstairs, the finished basement with laundry and full bathroom holds all of the possibilities; additional bedroom or in-law suite, playroom, TV/rec room, fitness room- whatever your needs are, this space is ready to accommodate. Not only is this home move-in ready, but there are a number of newer appliances being left behind, including the new refrigerator, dishwasher, stove, washer/dryer, gas grill and propane tanks, art table, mounted TV in basement, and more. This is an excellent opportunity to move right in and enjoy what this location has to offer; walking distance to Kent Park, a tot lot, dog park and walking trails, public transportation including Septa buses, regional rail, and trolley stops, 7-11, Bernie's pretzels, and countless other conveniences.



Schedule your showing today!



