



125 RHODE ISLAND AVENUE

125 RHODE ISLAND AVENUE, CHERRY HILL, NJ 08002

\$475,000

150 Years

JOHN D WOOD & CO.

London, Country & International Property

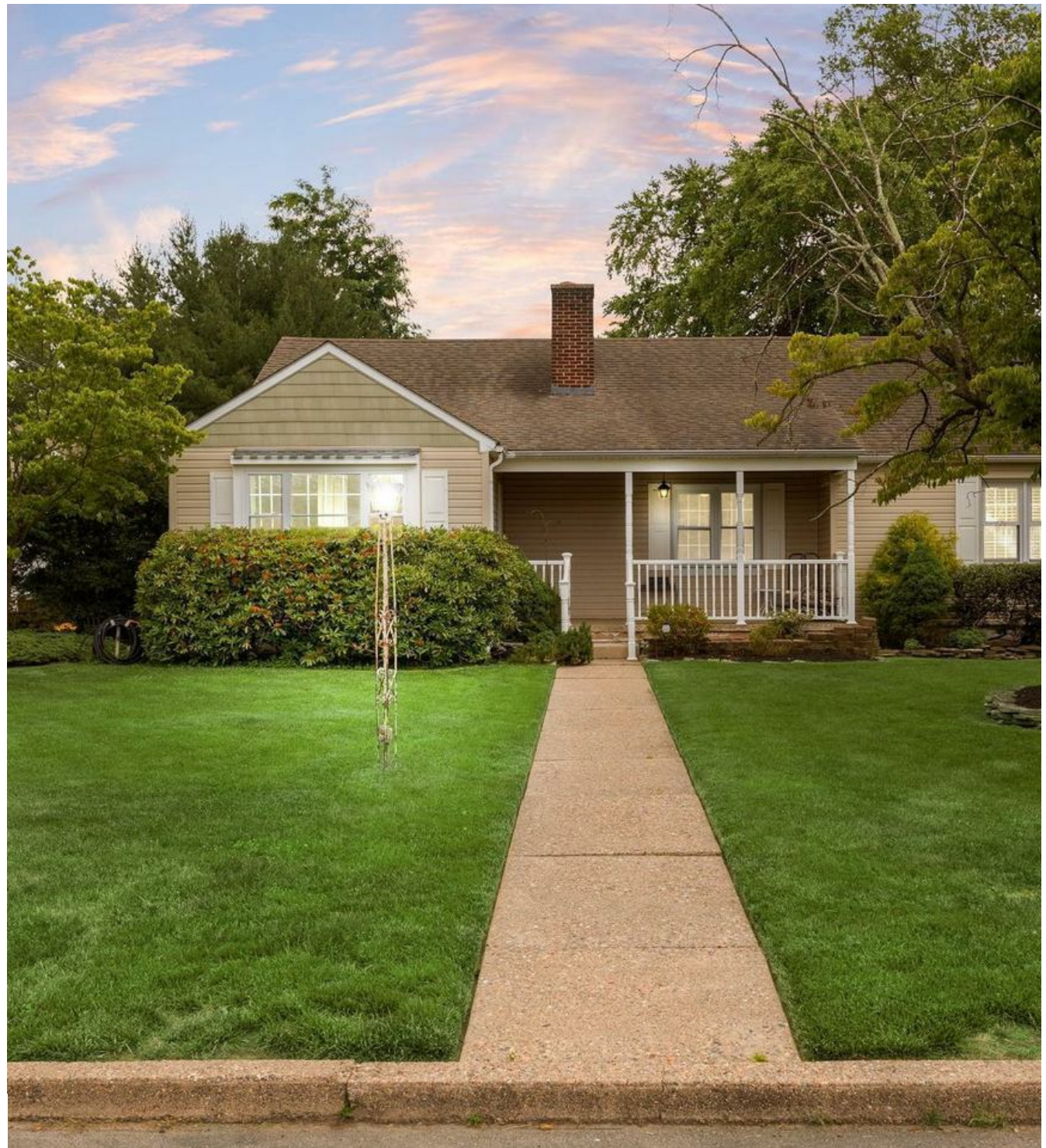
125 RHODE ISLAND AVENUE

125 RHODE ISLAND AVENUE, CHERRY HILL, NJ 08002

BEST AND FINAL DUE BY WEDNESDAY NIGHT 6:00 PM (6-17). AT THAT TIME, SELLER WILL REVIEW AND MAKE DECISION! Looking for one-floor living? Check. Need 4 BEDROOMS, 2.5 BATHS, OVER 1800 SQ FT. LIVABLE SPACE at an affordable price point in Cherry Hill? Check. Want a finished basement (OVER 600 SQ FT) with incredible flexibility, including a non-conforming bedroom, full bath, kitchen space, office area, and living room that could function as an in-law setup? Check. How about multiple living spaces, an attached garage, a fully fenced yard, and nearly half an acre of land in one of Cherry Hill's most desirable neighborhoods? Check, check, and check.

Heating Type: Baseboard,
Heating - Fuel Type: Gas,
Garage Count: 1 Car Garage,
Sewer: Public,
Fireplace Count: 1 Fireplace,
Water: City Water

\$475,000



Welcome to 125 Rhode Island Avenue in the highly sought-after Erlton subdivision-a home that offers far more than meets the eye. Step inside to an expansive living and dining area, currently utilized as a large living room, featuring beautiful hardwood flooring, a cozy wood-burning fireplace, newer windows, and an abundance of natural light. The kitchen offers plenty of cabinet storage, space for dining, and a practical layout ready for your personal touches and future upgrades. The true surprise on the main level is the oversized finished bonus room. Whether you envision a family room, home office, gym, playroom, formal dining space, or entertainment area, this room offers endless possibilities. A brand-new mini-split system provides year-round comfort, and direct access to the attached garage with a brand-new garage door adds everyday convenience. Then there's the feature that truly separates this home from the competition-the fully finished basement. With over 600 square feet of finished living space, you'll find a designated non-conforming bedroom area, full bathroom, office space, living room, and kitchen area.



Whether you're accommodating extended family, creating a private guest retreat, establishing a work-from-home setup, or simply looking for additional living space, the options are nearly endless. Back on the main level, you'll find four comfortable bedrooms, providing the flexibility and functionality today's buyers are seeking. Outside, the nearly half-acre lot offers a fully fenced backyard complete with a detached shed, paver patio, and plenty of room for pets, play, entertaining, gardening, or perhaps even the future pool you've always wanted. A covered front porch, four-car driveway, and prime location complete the package. Situated within eyesight of Clara Barton Elementary School and offering quick access to Route 70, shopping, dining, and all major South Jersey destinations, this location is as convenient as it is desirable. Lovingly maintained by the same owner for more than 30 years, 125 Rhode Island Avenue is the rare home that truly checks all the boxes—and then a few more.



